

INTRODUCING
cheftex

NEW HIGH
PERFORMANCE
FABRIC

2010

CHEF REVIVAL
PRODUCT
CATALOG



DESIGNED BY CHEFS FOR CHEFS®



HOT LOOK / COOL CREW™



TOOLS YOU CAN TRUST™



CONTENTS

CHEF APPAREL

| | | | |
|--------------|----------------------------------|---------------|-----------------------------------|
| CHEF JACKETS | | CHEF APRONS | |
| 8 | Corporate Jackets / Ladies | 32 | Chef Bib Apron |
| 10 | Brigade Jackets / Ladies | 32 | Bistro Apron 4-Sided |
| 12 | Cuisinier Jackets / Ladies | 33 | Bistro Aprons with Pockets |
| 16 | Classic & Executive Jackets | 33 | Berlin Apron |
| 18 | Traditional Jackets | | |
| 20 | Specialty Jackets | CHEF HEADWEAR | |
| 24 | Knife and Steel Jackets / Ladies | 35 | Chef Hats, Beanies, Baseball Caps |
| CHEF PANTS | | CHEF TOOLS | |
| 26 | Cargo Pants / Ladies | 36 | Knife Sharpening Stone |
| 28 | Executive Pants / Ladies | 36 | Cheese Cloth / Butcher's Twine |
| 29 | Chef Trousers | 37 | Knife Cases / Lemon Cover |
| 30 | Slim Fit Pants / E-Z Fit Pants | 38 | Drizzlers / Stain Remover |
| | | 38 | Replacement Buttons |
| | | 39 | Children's Chef Coats / T-Shirts |
| | | 40 | Custom Embroidery |
| | | 42 | Sizing Chart / Merchandisers |



CREW APPAREL

| | |
|-----------------------|-------------------------|
| CREW JACKETS & SHIRTS | |
| 46 | Cool Crew Jackets |
| 47 | Cool Crew Fresh Jackets |
| 48 | Basic Jackets |
| 48 | Cook Shirts |
| CREW PANTS & APRONS | |
| 49 | Baggy Pants |
| 49 | Cook Pants |
| 50 | Bistro / Bib Aprons |
| CREW HEADWEAR | |
| 51 | Pill Box Hats |
| 51 | Chef Berets |
| 52 | Scarf Hats |
| 52 | Neckerchiefs / Bandanas |
| 53 | Chef Hats |
| 53 | Baseball Caps |

CREWTOOLS

| | | | |
|-------------|------------------------------|----------------|--------------------|
| APRONS | | TOWEL | |
| 56 | Waist Aprons / Bistro Aprons | 88 | Bar Towels |
| 58 | Bib Aprons | 90 | Specialty Towels |
| 62 | Utility Economy Aprons | 92 | Micro Fiber |
| 64 | Institutional Aprons | | |
| 65 | Splash Resistant Aprons | FOOD TRANSPORT | |
| | | 93 | Insulated Carriers |
| HAND SAFETY | | DISPOSABLES | |
| 66 | Oven Mitts | 94 | Headwear / Aprons |
| 72 | Specialty Gloves | | |
| 74 | Sleeves | | |
| 75 | Handle Holders | | |
| 76 | Pot Holders | | |
| 78 | Pan Grabbers | | |
| 79 | Server Gloves | | |
| 80 | Dishwashing Utility | | |
| 82 | Nitrile / Flocked | | |
| 84 | Cut Resistant | | |
| | | 96 | Index |

CHEF REVIVAL®—YOUR INTEGRATED SOURCE FOR THE LEADING BRAND

OF CHEF AND CREW APPAREL AND THE TRUSTED SOURCE FOR CREW TOOLS

2010 CATALOG HIGHLIGHTS



Chef-tex™

The latest in our long history of revolutionary fabrics. Chef-tex offers the best moisture management, the ultimate in comfort, improved stain release and unmatched durability.



New Jacket Styles

More options than ever before – whether you need jackets tailored for ladies or just want some color.



Crew Apparel

New fresh food colors and 3/4 length sleeves to look good and be comfortable all day.



Hand Safety

When it comes to hand safety, Chef Revival has the broadest selection of products in the industry.



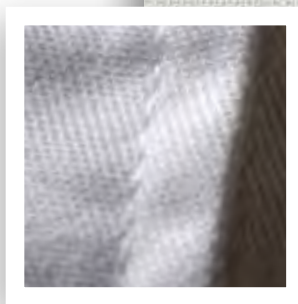
Aprons

Chef Revival offers the highest quality and broadest selection of front and back of house aprons.

innovation woven throughout

Cotton is not just cotton. Just because the tag says cotton, doesn't mean you should assume that all fabrics are equal. In fact, we have reenergized our fabrics with some impressive new features. Improvements that guarantee consistency, enhance quality, extend the life of the garment and save you money.

I N T R O D U C I N G



cheftex™

Our new high performance poly-cotton outperforms the competition where it counts most:

moisture management - Chef-tex is comprised of nano fibers that are 1/100th the size of a human hair. These fibers act as a shield around the main fiber to help water-based stains bead up and roll off while retaining all of the attributes of moisture management. It also has a drying rate 33% faster than the competition to keep users cool and comfortable.

comfort - The fabrics' smooth and luxurious feel is the result of a patented technology that has been engineered for high performance characteristics by private labs. In addition, the softness is permanent and consistent, even after multiple washings.

stain release - The fabric is able to handle tough oil stains that are normally very difficult to get out. This is due to a patented process directly applied to the fiber, which also prevents spreading and re-disposition in the wash. This is not a topical additive, which typically washes off, instead, this fabric's stain release performs for the life of the garment.

color retention - These fabrics hold their color through the life cycle of the product, even in whites. This enhanced durability results in increased ROI for the end user. In addition, our "Deep Dye" technology resists fading from sunlight, washings and oxidation.

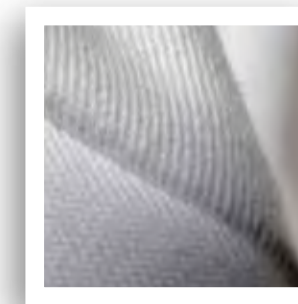
shape retention - Chef-tex outperforms the industry with superior "shape retention" in garments. The fabric holds its form better and longer than other fabrics used in comparable products, leading to a crisper garment and longer life cycle. Now, wrinkle resistance is an inherent attribute of the fabric.

O U R O T H E R Q U A L I T Y F A B R I C S



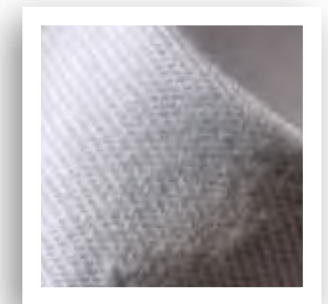
LUXURY COTTON

Our luxury fine line 5.5 oz. cotton fabric offers exceptional light weight Egyptian cotton feel with unmatched breathability, comfort and softness against the skin. A real show fabric which also has excellent performance in the kitchen.



100% COTTON

Our high quality 6-7oz. cottons are designed for the working chef. Cool and comfortable, these solid cotton twill construction features high durability, breathability and superior softness. A winning combination for any environment.



POLY-COTTON BLENDS

Our standard poly-cotton blends used in Knife & Steel and Crew Apparel are durable yet economic alternatives for all working conditions. With a range of options from 3.5 – 7oz. they offer high resilience and great performance.



CHEF APPAREL



JACKETS

- Corporate Jackets
- Brigade Jackets
- Cuisinier Jackets
- Specialty Jackets
- Knife & Steel Jackets



PANTS

- Cargo Pants
- Chef Trousers
- Executive Pants
- Slim Fit Pants
- E-Z Fit Pants



APRONS

- Chef Bistro Apron
- Chef Berlin Apron
- Chef Bib Apron



HEADWEAR

- Chef Hats
- Chef Beanies
- Baseball Caps



CHEF TOOLS

- Knife Sharpening Stone
- Knife Cases
- Cheese Cloth
- Butchers Twine
- Stain Remover
- T-Shirts
- Custom Embroidery

DESIGNED BY CHEFS FOR CHEFS™

Imagine how much better Chefs Jackets would be if they were actually designed by chefs. Well, imagine no more. Chef Revival worked closely with some of the industry's top chefs to develop some of the most innovative and high-quality chef apparel available. Thanks to the insights of these seasoned pro's, we added a number of useful features. Like a dropped shoulder yoke for ease of movement. High-performance fabrics for comfort and durability. And a full line of stylish apparel designed exclusively for female chefs. In short, all the right ingredients to make your job easier and more satisfying.





CORPORATE JACKETS

Our Corporate Jackets are stylishly crafted with luxurious fabrics for ultimate softness and comfort. The cross collar neckline, dropped shoulder design and thermometer/pen pocket are all a perfect choice for the executive chef whose highly diverse work schedule, from the kitchen, to gala dinners, public appearances and corporate affairs, demands the very best!



LAURENT MANRIQUE
Corporate Executive Chef
AQUA, San Francisco, CA

(item #J008)

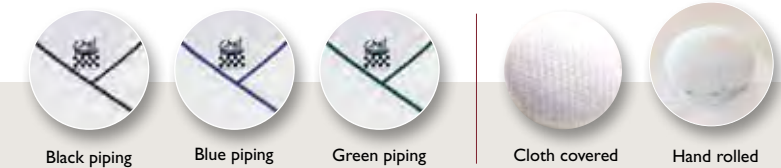
Corporate

| Item | Description | Material | Button style |
|--------|-----------------------------------|---------------|--------------------------|
| J006 | White chef jacket w/ white piping | Chef-tex™ | Cloth covered |
| J007 | White chef jacket w/ white piping | Luxury cotton | Hand rolled |
| J008 | White chef jacket w/ black piping | Chef-tex™ | Cloth covered |
| J008BL | White chef jacket w/ blue piping | Chef-tex™ | Cloth covered new |
| J008GN | White chef jacket w/ green piping | Chef-tex™ | Cloth covered new |
| J009 | White chef jacket w/ black piping | Luxury cotton | Hand rolled |

When ordering, add size code to item number XS, S, M, L, XL, 2X, 3X, 4X, 5X
Example: J006-XL

NEAL FRASER
Executive Chef
GRACE RESTAURANT
Los Angeles, CA

(item #J007)



Ladies Corporate

| Item | Description | Material | Button style |
|---------|--|-----------|--------------------------|
| LJ008 | Ladies white chef jacket w/ black piping | Chef-tex™ | Cloth covered new |
| LJ008GN | Ladies white chef jacket w/ green piping | Chef-tex™ | Cloth covered new |

When ordering, add size code to item number XS, S, M, L, XL, 2X, 3X, 4X, 5X
Example: LJ008-S



New ladies side-slit allows for better fit and ease of movement





BRIGADE JACKETS

Our Brigade Jackets are designed for creative chefs who want a stylish and unique look with some subtle color in the jackets. These jackets feature colored push-through stud buttons for an elegant and sophisticated look.



MARCO CHALCO
Executive Chef
HOULIHAN'S

(item #J044)



Brigade

| Item | Description | Material | Button style |
|--------|-----------------------------------|-----------|-------------------------------|
| J044 | White chef jacket w/ black piping | Chef-tex™ | Black push-through |
| J044BL | White chef jacket w/ blue piping | Chef-tex™ | Blue push-through new |
| J044GN | White chef jacket w/ green piping | Chef-tex™ | Green push-through new |

When ordering, add size code to item number XS, S, M, L, XL, 2X, 3X, 4X, 5X Example: J044-XL



JOHN C. REIFF C.C.C.
Chef / Sr. Natl. Accounts Manager
SAN JAMAR-CHEF REVIVAL

(item #J044)



Black piping



Blue piping



Green piping



Black push-through



Green push-through



Blue push-through



LJ044GN

Ladies Brigade

| Item | Description | Material | Button style |
|---------|-----------------------------------|-----------|-------------------------------|
| LJ044GN | White chef jacket w/ green piping | Chef-tex™ | Green push-through new |
| LJ044 | White chef jacket w/ black piping | Chef-tex™ | Black push-through new |

When ordering, add size code to item number XS, S, M, L, XL, 2X Example: LJ044-XL



New ladies side-slit allows for better fit and ease of movement





CUISINIER
JACKETS

Our Cuisinier style jacket is the benchmark in chef jacket design, with its Mandarin collar and drop shoulder feature for extra movement and comfort. It also includes the thermometer/pen pocket and 12 crush proof cloth covered buttons.



MICHAEL CIMARUSTI
Executive Chef
PROVIDENCE
Los Angeles, CA
(item #J058)

Cuisinier

| Item | Description | Material | Button style |
|------|---|---------------|---------------|
| J015 | White, long sleeve chef jacket | Chef-tex™ | Cloth covered |
| J016 | White, long sleeve chef jacket | 100% cotton | Cloth covered |
| J053 | White jacket w/ tri-color national collar | Luxury cotton | Cloth covered |
| J057 | White, short sleeve jacket w/ pocket | Luxury cotton | Cloth covered |
| J058 | White, long sleeve jacket w/ pocket | Luxury cotton | Cloth covered |

When ordering, add size code to item number XS, S, M, L, XL, 2X, 3X, 4X, 5X Example: J058-XL



BRIAN AVERNA
Corporate Executive Chef
SARA LEE
(item #J015)



Cloth covered

Ladies Cuisinier

| Item | Description | Material | Button style |
|-------|----------------------------------|-------------|---------------|
| LJ025 | Ladies white, long sleeve jacket | Chef-tex™ | Cloth covered |
| LJ026 | Ladies white, long sleeve jacket | 100% cotton | Cloth covered |

When ordering, add size code to item number XS, S, M, L, XL, 2X Example: LJ025-S



LJ025





CUISINIER
JACKETS

Our Cuisinier style jacket is the benchmark in chef jacket design, with its Mandarin collar and drop shoulder feature for extra movement and comfort. It also includes the thermometer/pen pocket and 12 crush proof cloth covered buttons.



NICK STELLINO
Chef/Host of "Nick Stellino's Cooking With Friends" on PBS
www.nickstellino.com
(item #J018BD)

Cuisinier COLORS

| Item | Description | Material | Button style |
|---------|------------------------------------|-------------|---------------|
| J017BK | Black long sleeve chef jacket | 100% cotton | Cloth covered |
| J016CLT | Claret red long sleeve chef jacket | 100% cotton | Cloth covered |
| J018BD | Denim long sleeve chef jacket | 100% cotton | Cloth covered |

When ordering, add size code to item number XS, S, M, L, XL, 2X, 3X, 4X, 5X Example: J017-XL



Cloth covered
Black



Cloth covered
Claret



Cloth covered
Antique Blue
Denim

KIM DE LA VILLEFROMOY
Co-Founder/Chef
CHEF REVIVAL
(item # J016CLT)



Ladies Cuisinier COLORS

| Item | Description | Material | Button style |
|----------|------------------------------|-------------|---------------|
| LJ021PK | Pink, long sleeve jacket | 100% cotton | Cloth covered |
| LJ025BK | Black, long sleeve jacket | Chef-tex™ | Cloth covered |
| LJ030BL | Ice Blue, long sleeve jacket | 100% cotton | Cloth covered |
| LJ031YL | Yellow, long sleeve jacket | 100% cotton | Cloth covered |
| LJ032CLT | Claret, long sleeve jacket | 100% cotton | Cloth covered |

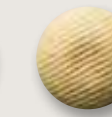
When ordering, add size code to item number XS, S, M, L, XL, 2X Example: LJ021PK-XL



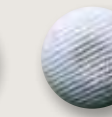
Cloth covered
Black



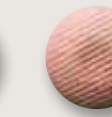
Cloth covered
Claret



Cloth covered
Yellow



Cloth covered
Ice Blue



Cloth covered
Pink

RACHAEL LEVINE
Executive Chef
NUGGET MARKETS, INC.
Woodland, CA
(item # J025BK)





CLASSIC &
EXECUTIVE
JACKETS

Our Chef Jackets are the perfect choice for the hardworking chef who requires the traditional Chef Revival® thermometer/pen pocket, back yoke and drop shoulder features for added movement and comfort.



WALTER PISANO
Executive Chef
TULIO
Seattle, WA
(Item # J023)

Classic WHITE

| Item | Description | Material | Button style |
|------|---|-------------|--------------------|
| J022 | White long sleeve chef jacket | 100% cotton | White push-through |
| J023 | White long sleeve chef jacket w/ pocket | Chef-tex™ | White push-through |
| J024 | White long sleeve chef jacket | Chef-tex™ | White push-through |

When ordering, add size code to item number XS, S, M, L, XL, 2X, 3X, 4X, 5X Example: J023-XL



White push-through



Executive BLACK

| Item | Description | Material | Button style |
|------|---|-----------|--------------------|
| J013 | White long sleeve jacket w/ black cuffs | Chef-tex™ | Black push-through |

When ordering, add size code to item number XS, S, M, L, XL, 2X, 3X, 4X, 5X Example: J013-XL



Black push through



MICHAEL MORRISON
Director of Culinary Development
KAJUN KETTLE FOODS
(item # J013)



TRADITIONAL JACKETS



Our Traditional Jacket is a great choice for the hardworking chef who desires a traditional look with key Chef Revival® features such as a thermometer/pen pocket, back yoke and drop shoulder features for added movement and comfort.

JOSEPH CIMINERA, CEC
 TV personality and author of the celebrated book
 "NEW AMERICAN COOKING"
 www.tastethistv.com
 (Item # J045BK)

Traditional WHITE

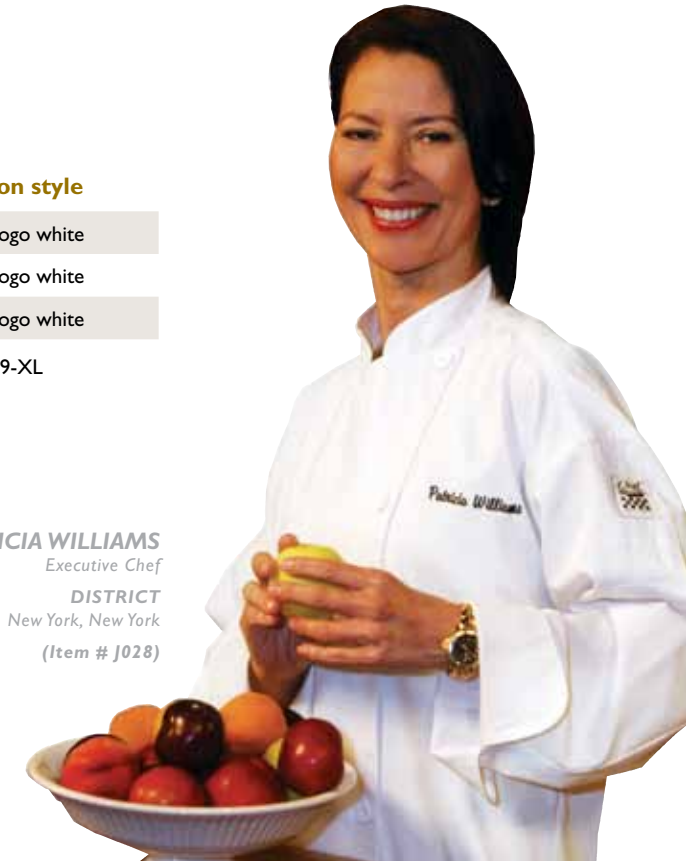
| Item | Description | Material | Button style |
|------|--------------------------------|-------------|-----------------|
| J028 | White long sleeve chef jacket | Chef-tex™ | Chef logo white |
| J029 | White long sleeve chef jacket | 100% cotton | Chef logo white |
| J032 | White short sleeve chef jacket | Chef-tex™ | Chef logo white |

When ordering, add size code to item number XS, S, M, L, XL, 2X, 3X, 4X, 5X Example: J029-XL



Chef logo white

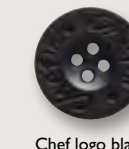
PATRICIA WILLIAMS
 Executive Chef
 DISTRICT
 New York, New York
 (Item # J028)



Traditional BLACK

| Item | Description | Material | Button style |
|--------|--------------------------------|-----------|-----------------|
| J030BK | Black long sleeve chef jacket | Chef-tex™ | Chef logo black |
| J045BK | Black short sleeve chef jacket | Chef-tex™ | Chef logo black |

When ordering, add size code to item number XS, S, M, L, XL, 2X, 3X, 4X, 5X Example: J030BK-XL



Chef logo black

MICHAEL HILLYER
 Executive Chef
 THE CAPITAL GRILLE
 Seattle, WA
 (Item # J030BK)





SPECIALTY JACKETS



The Metro and Bermuda Jackets are designed to offer exceptional comfort with a modern flair. With their black trim shoulder panel, thermometer/pen pocket and drop shoulder design, these are a perfect choice for a casual theme environment.



ROCK HARPER
Winner, Season 3 - Hell's Kitchen
President - Chef

CHEF ROCK, INC.
Washington, DC
www.chefrockinc.com

(item #J027)



Metro LONG SLEEVE

| Item | Description | Material | Button style |
|------|---------------------------------|-----------|---------------------|
| J027 | White chef jacket w/ black yoke | Chef-tex™ | Hidden snap closure |

When ordering, add size code to item number XS, S, M, L, XL, 2X, 3X, 4X, 5X Example: J027-XL



CHRISTINA MACHAMER
Winner Season 4 Hell's Kitchen / Chef
THOMAS KELLER
RESTAURANT GROUP
www.bcbcblends.com

(Item # J027)



Bermuda SHORT SLEEVE

| Item | Description | Material | Button style |
|------|-----------------------------------|-----------|--------------------|
| J031 | White chef jacket with black yoke | Chef-tex™ | Black push-through |

When ordering, add size code to item number XS, S, M, L, XL, 2X, 3X, 4X, 5X Example: J031-XL



Black push-through



MARC WEISS
DJ Chef / Culinary Entertainer
www.DJchef.com

(Item #J031)





SPECIALTY
JACKETS



The Tunic is a
Chef Revival® first.

A pull-over style chef jacket
without the buttons! The Tunic
features a back yoke and drop
shoulder design with a two
position adjustable neck snap
closure. Comfortable and stylish,
these chef tunics provide for
maximum movement.

MICHAEL S. ZELLER
Corporate Executive Chef, R&D
GRECIAN DELIGHT FOODS

(item #T001)

Tunic LONG SLEEVE

| Item | Description | Material | Closure |
|--------|--|-----------|-------------|
| T001 | White pullover chef tunic w/ black cuffs | Chef-tex™ | Hidden snap |
| T004BK | Black long sleeve pullover tunic (shown right) | Chef-tex™ | Hidden snap |

When ordering, add size code to item number S, RG, XL, 2X, 3X Example: T004BK-XL



new high performance poly-cotton

CLADYS MAGAGNA
Executive Sous Chef

FAIRMONT ACAPULCO PRINCESS
AND FAIRMONT PIERRE
Marques, Mexico

(item #T004BK)



Knife and Steel® Tech Coat

| Item | Description | Material | Closure |
|------|------------------------|-------------------|-----------------|
| J034 | White knee length coat | Poly-cotton blend | Chef logo white |

When ordering, add size code to item number S, RG, XL, 2X, 3X Example: J034-XL



Chef logo white

BRAD BARNES
President

GIGA CHEF
www.gigachef.com

(item #J034)





KNIFE
and
STEEL®
JACKETS

Our Knife and Steel® Jacket is the true work-horse in chef apparel. When it comes to durability, comfort and overall value, Knife and Steel as the name implies, will work hard for you and your operation. The standard poly-cotton blend fabric with the Chef Revival® features - thermometer/pen pocket, drop shoulder and back yoke construction and new ¾ sleeve keep your performance levels high.

Knife and Steel® LONG SLEEVE

| Item | Description | Material | Button style |
|------|-------------------------------|-------------------|-----------------|
| J001 | White chef jacket long sleeve | Poly-cotton blend | Nylon knot |
| J002 | White chef jacket long sleeve | Poly-cotton blend | Chef logo white |
| J003 | White chef jacket long sleeve | Poly-cotton blend | Cloth knot |
| J004 | White chef jacket long sleeve | 100% cotton | Cloth knot |

When ordering, add size code to item number XS, S, M, L, XL, 2X, 3X, 4X, 5X
Example: J001-XL

Nylon knot



Cloth knot



Chef logo white



J002

Ladies Knife and Steel® LONG SLEEVE

| Item | Description | Material | Button style |
|-------|--|-------------------|-----------------|
| LJ027 | Ladies tailored white long sleeve jacket | Poly-cotton blend | Chef logo white |
| LJ028 | Ladies tailored white long sleeve jacket | Poly-cotton blend | Cloth knot |

When ordering, add size code to item number XS, S, M, L, XL, 2X, 3X, 4X, 5X Example: LJ027-S

Chef logo white



Cloth knot



LJ027

Knife and Steel® SHORT SLEEVE

| Item | Description | Material | Button style |
|--------|--------------------------------|-------------------|-----------------|
| J005 | White chef jacket short sleeve | Poly-cotton blend | Chef logo white |
| J005BK | Black chef jacket short sleeve | Poly-cotton blend | Chef logo black |

When ordering, add size code to item number XS, S, M, L, XL, 2X, 3X, 4X, 5X
Example: J005-XL



Chef logo white



Chef logo black



J005

Knife and Steel® ¾ SLEEVE

| Item | Description | Material | Button style |
|------|----------------------------|-------------------|-----------------|
| J112 | White Chef Jacket ¾ sleeve | Poly-cotton blend | Chef logo white |

When ordering, add size code to item number XS, S, M, L, XL, 2X, 3X, 4X, 5X Example: J112-XL



Chef logo white



J112



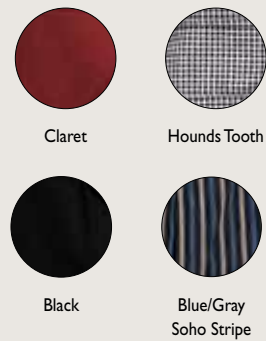
CHEF PANTS

From car keys to cell phones, Chef Revival® cargo pants meet all the space and comfort expectations of today's chefs.



Cargo Pants

- 2" elastic waist with drawstring
- Zip fly closure
- 2 side seam pockets
- 2 rear patch pockets
- 2 snap-down thigh side pockets



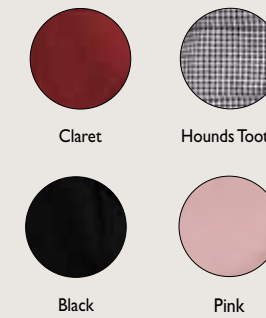
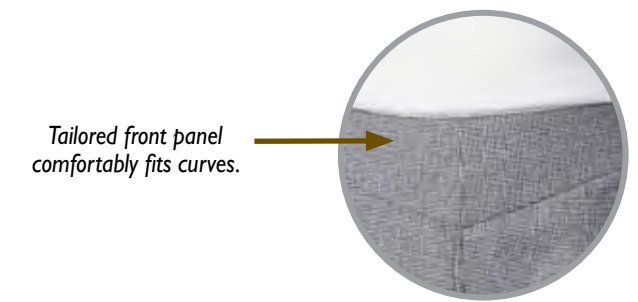
| Item | Description | Material |
|---------|-----------------------|-------------------|
| P023CLT | Claret pants | 100% cotton |
| P023HT | Hounds Tooth pants | 100% cotton |
| P024BK | Black pants | Poly-cotton blend |
| P023BK | Black pants | 100% cotton |
| P023BGS | Blue/Gray Soho Stripe | 100% cotton |

When ordering, add size code to item number XS, S, M, L, XL, 2X, 3X, 4X, 5X Example: P023CLT-XL



Ladies Cargo Pants

- Two snap down side leg pockets
- Two rear patch pockets
- Two roomy side seam pockets
- Elastic waistband in back



| Item | Description | Material |
|----------|--------------------------|-------------------|
| LP002BK | Black cargo pants | Poly-cotton blend |
| LP001BK | Black cargo pants | 100% cotton |
| LP001HT | Hounds Tooth cargo pants | 100% cotton |
| LP001PK | Pink cargo pants | 100% cotton |
| LP001CLT | Claret cargo pants | 100% cotton |

When ordering, add size code to item number XXS, XS, S, M, L, XL, 2X, 3X Example: LP001HT-XL



CHEF PANTS

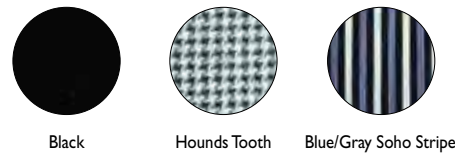


Executive Pants

- Relaxed fit; pleated front
- Top button and zip fly closure
- Elasticized waist and drawstring
- One rear button-down flap pocket
- Two side-seam pockets

| Item | Description | Material |
|---------|-----------------------------|-------------------|
| P017BK | Black pants | Poly-cotton blend |
| P018HT | Hounds Tooth pants | 100% cotton |
| P019BGS | Blue/Gray Soho Stripe pants | 100% cotton |

When ordering, add size code to item number
XS, S, M, L, XL, 2X, 3X, 4X, 5X Example: P018HT-XL



P018HT



Ladies Executive Pants

- Two angled front pockets, one set-in right welt hip pocket
- Belt loops

| Item | Material |
|---------|---------------------------|
| LP203BK | 100% polyester microfiber |

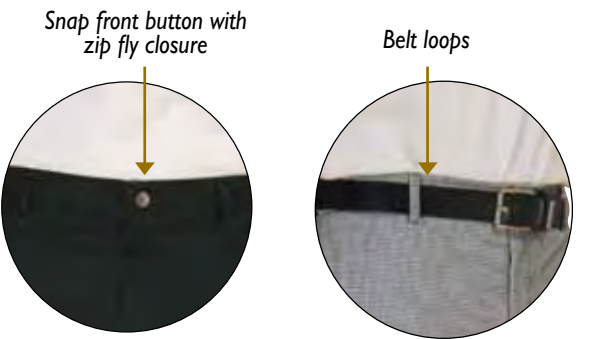
Available in sizes: 4, 6, 8, 10, 12, 14, 16, 18
When ordering, add size code to item number,
Example: LP203BK-4

LP203BK



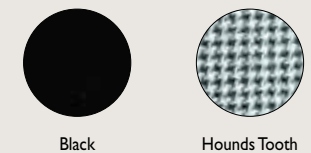
Chef Trousers

- Relaxed fit
- Snap front button with zip fly closure
- Belt loops
- Elasticized back panel
- Two side-seam pockets
- Two rear pockets



| Item | Description | Material |
|--------|-----------------------|-------------------|
| P034BK | Black trousers | Poly-cotton blend |
| P034HT | Hounds Tooth trousers | Poly-cotton blend |

When ordering, add size code to item number
XS, S, M, L, XL, 2X, 3X, 4X, 5X Example: P034BK-XL



P034BK



CHEF PANTS

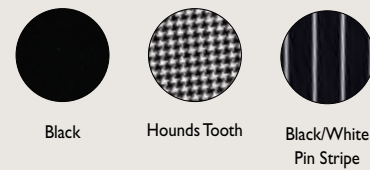


Slim Fit Pants

- A more streamlined fit
- 2" elastic waistband with drawstring
- Deep side pockets
- Two rear patch pockets; zip fly

| Item | Description | Material |
|--------|------------------------|-------------------|
| P014BK | Black pants | Poly-cotton blend |
| P015HT | Hounds Tooth pants | Poly-cotton blend |
| P016WS | White Pin Stripe pants | 100% cotton |

When ordering, add size code to item number
XS, S, M, L, XL, 2X, 3X, 4X, 5X Example: P016WS-XL



E-Z Fit Pants STRIPED

- Relaxed fit; elasticized waistband with drawstring; zip fly
- Two deep side-seam pockets; two rear patch pockets

| Item | Description | Material |
|---------|-----------------------------------|-------------------|
| P040BK | Black pants | 100% cotton |
| P002BK | Black pants | Poly-cotton blend |
| P040RS | Red/Black pin stripe pants | 100% cotton |
| P040WS | Black/White pin stripe pants | 100% cotton |
| P040BGS | Blue/Gray soho stripe pants | 100% cotton |
| P040RGS | Red/Gray soho stripe pants | 100% cotton |
| P040PW | Periwinkle/Black pin stripe pants | 100% cotton |



When ordering, add size code to item number:
XS, S, M, L, XL, 2X, 3X, 4X, 5X Example: P040RS-XL



E-Z Fit Pants PATTERNED

| Item | Description | Material |
|--------|----------------------------|-----------------------|
| P040RF | Red Fish pattern pants | 100% cotton |
| P040BF | Blue Fish pattern pants | 100% cotton |
| P040PP | Pepper Print pattern pants | 100% cotton |
| P004HT | Hounds Tooth pattern pants | Yarn dyed poly-cotton |
| P005HT | Hounds Tooth pattern pants | 100% cotton |



When ordering, add size code to item number:
XS, S, M, L, XL, 2X, 3X, 4X, 5X Example: P040BF-XL



CHEF
APRONS



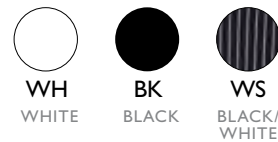
Chef Bib Apron

- Adjustable neck strap
- Front pocket
- 38" x 29"
- Tangle free ties

| Item | Description | Material | Closure |
|-------|----------------|-------------------|------------------|
| 619BA | Chef bib apron | Poly-cotton blend | Tangle free ties |

When ordering, add color choice to item number:
Example: 619BA-WH

One size fits all



619BA-WS

Chef Bistro Apron WITH POCKETS

- A007 / A011BK
- Right hip pocket
 - Tangle free ties
 - 29" width x 34" length

- A008
- 2 pockets
 - Self ties
 - 32" width x 38" length

| Item | Description | Material | Closure |
|--------|----------------------------|-------------------|------------------|
| A007 | White apron, single pocket | Poly-cotton blend | Tangle free ties |
| A008 | White apron, two pockets | 100% cotton | Self ties |
| A011BK | Black apron, single pocket | Poly-cotton blend | Tangle free ties |

One size fits all



A011BK

A008

Chef Bistro Apron 4-SIDED



A009BK



- 4-sided
- Reversible
- 30" x 30"
- Tangle free ties

| Item | Description | Material | Closure |
|--------|-------------|-------------------|------------------|
| A005 | White apron | Poly-cotton blend | Tangle free ties |
| A009BK | Black apron | Poly-cotton blend | Tangle free ties |

One size fits all

Chef Berlin Apron



- 40" width x 36" length
- 2 side slits for easy pant pocket accessibility
- Tangle free ties

| Item | Description | Material | Closure |
|------|-------------|-------------------|------------------|
| A004 | White apron | Poly-cotton blend | Tangle free ties |

One size fits all



A004



CHEF
HEAD
WEAR



Chef Hats

| Item | Description | Material |
|------|--|-------------------|
| H026 | Mesh chef hat 11" with adjustable velcro closure | Poly-cotton blend |
| H057 | Classic chef toque 9" with adjustable head band | Poly-cotton blend |
| H058 | Classic chef toque 7" with adjustable head band | Poly-cotton blend |



Chef Beanies

| Item | Description | Material |
|--------|--|-------------|
| H059WH | White chef beanie with elasticized head band | 100% cotton |
| H060BK | Black chef beanie with elasticized head band | 100% cotton |



Baseball Caps

| Item | Description | Material |
|--------|---|-------------|
| H063WH | White baseball hat with adjustable head strap | 100% cotton |
| H064BK | Black baseball hat with adjustable head strap | 100% cotton |





CHEF
TOOLS

8" Combo Sharpening Stone



CBI008

- Super rubber grip holder
- Reversible aluminum oxide stone. Use either water or mineral oil, but never both.
- Provides a finer finish than silicone carbide
- Gray coarse side for sharp cutting edge (150 grit)
- Orange side for honing (400 grit)

Cheese Cloth



Perfect for preserving cheese and salads, straining, steaming or blanching, basting poultry, poaching fish, cleaning and polishing.

Bulk Packaged

- G10** - 36" x 80 yards (Grade 10)
- G40** - 36" x 70 yards (Grade 40)
- G80** - 36" x 60 yards (Grade 80)

- High grade 100% lintless cotton
- Silicone free, biodegradable and incinerable

Merchandiser Packaged

- G10-R** (Grade 10)
- G40-R** (Grade 40)

- Size: 4 sq yds/package
- Perfect for "Cash and Carry"

Butcher's Twine



- Tie poultry, roasts, ham or seasoning bouquets

BT12 (12 ply)
3600 ft./cone
Breaking strength: 26 lbs.

BT30 (30 ply)
1625 ft./cone
Breaking strength: 65 lbs.

Knife Cases

Chef Revival® Knife Bags help keep your knives safe and portable. Use these durable knife bags to avoid dulling surfaces coming into contact during storage.

- 20" length
- Detachable shoulder strap
- Easy to clean

| Item | Description | Material |
|-------------|-----------------|------------------|
| KB7 | Holds 7 knives | Heavy duty nylon |
| KB10 | Holds 10 knives | Heavy duty nylon |
| KB17 | Holds 17 knives | Heavy duty nylon |



Lemon Cover

- Lemon covers to keep seeds and pulp out of meals.

LC001





CHEF
TOOLS



Drizzlers 4-PACK

CB1004

2 each - 2 oz. sauce bottle
2 each - 4 oz. sauce bottle

- Sauce paintings, desserts, entrees, appetizers and salads
- Use for travel, competitions, demos, a la carte and banquets
- Natural plastic with fine tip for precise control



Chef Revival® Stain Remover

CB1016

- Hard hitting pre-wash designed for kitchen stains
- 16 oz.



Replacement Buttons

- Available upon request, call customer care at 800-352-CHEF (2433)



Chef Kids Chef Coats

| Item | Description | Age |
|-----------------|---------------------------|--------------|
| KJ001-XS | Traditional jacket - kids | 4-5 yrs |
| KJ001-S | Traditional jacket - kids | 6-7 yrs |
| KJ001-M | Traditional jacket - kids | 7-8 yrs |
| JB001 | Traditional jacket - baby | 18-24 months |
| KA001 | Bib apron | Chef Kids |
| KH001 | Chef hat | Chef Kids |



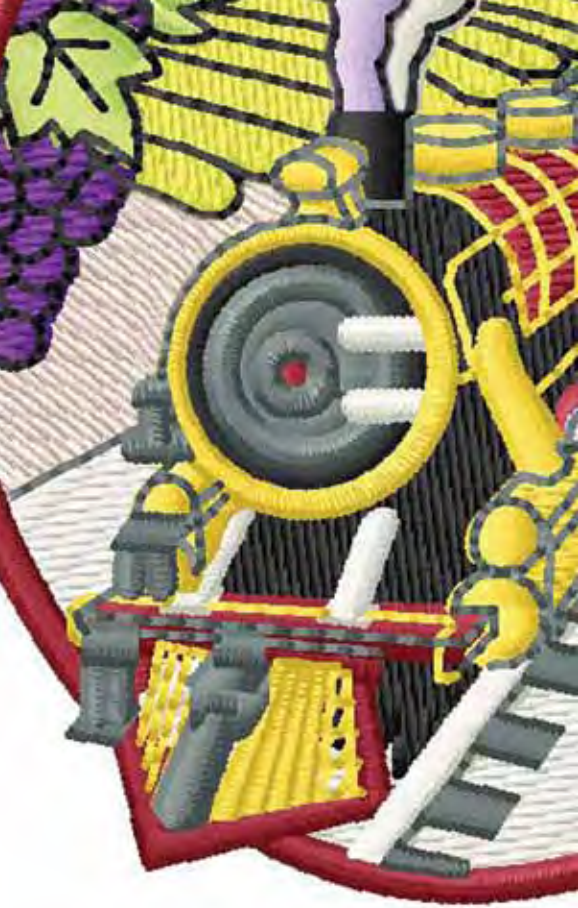
Chef Revival® T-Shirts

| Item | Description | Size |
|---------------|--------------------|------------|
| TS001* | White cotton shirt | RG, XL, 2X |
| TS002* | Black cotton shirt | RG, XL, 2X |

* When ordering, add size code to item number
Example: TS001-XL

I N H O U S E

Embroidery and Monogramming



Tabasco® and the Tabasco® diamond logo are registered trademarks and service marks exclusively of McIlhenny Company, Avery Island, Louisiana 70513

For that professional touch, embroidered apparel gives you a personalized, custom-tailored look. Whether the monogram is your establishment's name or your own, it's a fitting complement to your apparel and operation.

QUALITY GUARANTEED.
Our state-of-the-art embroidery machines create designs that are precise, clean and impressive.

How to order

Embroidered logos
Your logo can be embroidered on many items (jackets, aprons, hats, napkins, etc.). There is a one time set-up/digitization charge. Charges will vary depending upon stitch count. Once the logo is prepared, you will be advised of the appropriate costs.

Please submit your logo in either PDF, JPEG, or TIFF format.

FILES SHOULD BE SUBMITTED TO:
Customer Care at orders@chefrevival.com

Name and title
When ordering embroidery, choose from Script, or Block lettering. Block lettering comes in all caps or upper and lower case. Our standard height for all line embroidery is 0.4" for ALL CAPS and 0.35" for Upper and Lower Case.

Embroidery orders add ten working days from receipt of embroidery confirmation.

Embroidered garments cannot be returned. Please check your garment sizes and embroidery needs for accuracy.

Basic embroidery tips

NOTE: Embroidery placement is referred to as from the vantage point of someone wearing the garment.

Jackets & Tunics: For best results, please limit total characters (including space) to 16 or less.

Women & Extra Small Jackets: Most logos must be reduced in size and it is recommended that no more than 12 letters are used.

Kids Jackets: Lines on the right or left side must be 10 letters or less. Logos are normally placed in the center of the jacket and may also have to be reduced.

Tunics and Metro Jackets: No lines or logos on the right side of the chest.

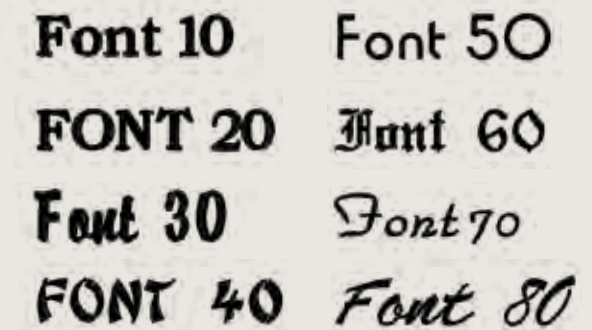
Bib Aprons: Standard logo placement is top center.

Berlin and Four Sided Aprons: Standard placement is top right hip or bottom left (above Chef logo).

Bistro Aprons: Standard placement is top left hip framed across from pocket. Bottom left and right are also available.

Font options:

Listed below are some of our more popular font styles.

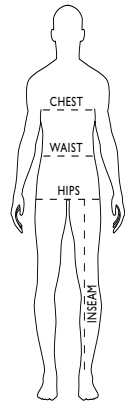


Color options:

Choose from a vast array of colors, please have name of color or PMS color readily available.

Call Customer Care if you have any questions regarding our state-of-the-art custom embroidery:

800.352.CHEF (2433)



SIZING CHART: U.S. & EUROPEAN MEASUREMENTS

Jackets - Order size according to your chest or hip measurements, whichever is larger. If measurements are in between sizes, order the larger size.
Chest/Bust - Measure over clothing to be worn. Measure around fullest part of chest or bust, under the arms and around shoulder blades. Keep tape straight and level.
Pants - Order size according to your waist or hip measurement, whichever is larger.
Waist - Measure around natural waistline above hip bones. Don't hold your breath.
Hips - Measure around fullest part of hip.
Inseam - Measure from base of crotch seam to top of shoe to be worn.

* Sizes 6X and above are Custom Orders. Please call Customer Care for lead times. Customer Care: 800.352.CHEF (2433)

| U.S. SIZE | XS | S | M | L | XL | 2X | 3X | 4X | 5X | 6X* | 7X* | 8X* |
|-----------------------|-------|-------|-------|-------|-------|-------|-------|-------|-------|-------|-------|-------|
| JACKETS | | | | | | | | | | | | |
| Chest (inch) | 32-34 | 36-38 | 40-42 | 44-46 | 48-50 | 52-54 | 56-58 | 60-62 | 64-66 | 68-70 | 72-74 | 76-78 |
| LADIES JACKETS | | | | | | | | | | | | |
| Female U.S. | 2 | 4-6 | 8-10 | 12-14 | 16-18 | 20-22 | 24-26 | 28-30 | 32-34 | • | • | • |
| TUNICS | | | | | | | | | | | | |
| Chest (inch) | N/A | 35-38 | 39-44 | N/A | 45-48 | 49-52 | 53-57 | • | • | • | • | • |
| PANTS | | | | | | | | | | | | |
| Waist (inch) | 24-26 | 28-30 | 32-34 | 36-38 | 40-42 | 44-46 | 48-50 | 52-54 | 56-58 | • | • | • |
| Hip (inch) | 34-36 | 38-40 | 42-44 | 46-48 | 50-52 | 54-56 | 58-60 | 62-64 | 66-68 | • | • | • |
| Inseam (inch) | 30 | 32 | 33 | 34 | 34 | 34 | 34 | 34 | 34 | • | • | • |
| LADIES PANTS | | | | | | | | | | | | |
| Female U.S. | 2 | 4 | 6 | 8 | 10 | 12 | 14 | 16 | • | • | • | • |
| Waist (inch) | 20-21 | 22-23 | 24-25 | 26-27 | 28-30 | 32-34 | 36-38 | 40-42 | • | • | • | • |
| Hip (inch) | 40 | 42 | 44 | 46 | 48 | 50 | 52 | 54 | • | • | • | • |
| Inseam (inch) | 30 | 32 | 33 | 34 | 34 | 34 | 34 | 34 | • | • | • | • |

| EUROPEAN SIZE | XS | S | M | L | XL | 2X | 3X | 4X | 5X | 6X* | 7X* | 8X* |
|-----------------------|-------|--------|---------|---------|---------|---------|---------|---------|---------|-----|-----|-----|
| JACKETS | | | | | | | | | | | | |
| Chest (cm) | 81-86 | 91-96 | 101-106 | 111-116 | 121-127 | 132-137 | 142-147 | 152-157 | 162-167 | • | • | • |
| LADIES JACKETS | | | | | | | | | | | | |
| Female European | 32 | 34-36 | 38-40 | 42-44 | 46-48 | 50-52 | 54-56 | 58-60 | 62-64 | • | • | • |
| TUNICS | | | | | | | | | | | | |
| Chest (cm) | N/A | 89-96 | 99-111 | N/A | 114-121 | 124-132 | 134-144 | • | • | • | • | • |
| PANTS | | | | | | | | | | | | |
| Waist (cm) | 61-66 | 71-76 | 81-86 | 91-96 | 10-106 | 111-116 | 121-127 | 132-137 | 142-147 | • | • | • |
| Hip (cm) | 86-91 | 96-101 | 106-111 | 116-121 | 127-132 | 137-142 | 147-152 | 157-162 | 167-172 | • | • | • |
| Inseam (cm) | 76 | 81 | 83 | 86 | 86 | 86 | 86 | 86 | 86 | • | • | • |
| LADIES PANTS | | | | | | | | | | | | |
| Female European | 32 | 34 | 36 | 38 | 40 | 42 | 44 | 46 | • | • | • | • |
| Waist Size (cm) | 50-53 | 55-58 | 61-63 | 66-68 | 71-76 | 81-86 | 91-96 | 101-106 | • | • | • | • |
| Hip (cm) | 101 | 106 | 111 | 116 | 121 | 127 | 132 | 137 | • | • | • | • |
| Inseam (cm) | 76 | 76 | 81 | 83 | 83 | 86 | 86 | 86 | • | • | • | • |

Merchandisers



4 Sided 6' x 2' Display Rack w/ Casters
CRDR6 (rack only)
CRMERCH1 (includes product)



CrewWare® Oven Mitt Merchandiser
BIN30-WH



CrewWare® Bar Towel Merchandiser
BIN36-CR

| Item | Description | Size | Features |
|-------------------|---|---------------------|--|
| CRDR6 | 4 Sided 6' x 2' Display Rack w/ Casters (rack only) | 72"W x 72"H x 24"D | Displays Chef Apparel and Crew Apparel • Great for merchandising a full line of chef products • Included with qualifying prepaid stocking orders |
| CRMERCH1 | 4 Sided 6' x 2' Display Rack w/ Casters | 72"W x 72"H x 24"D | Displays Chef Apparel, Crew Apparel and CrewWare Aprons • Great for merchandising a full line of chef products • Rack included with qualifying prepaid stocking orders |
| BIN30-WH | CrewWare Oven Mitt Merchandiser | 26"W x 30"H x 26"D | Great for merchandising oven mitts at registers and high traffic areas • Included with qualifying prepaid Oven Mitt orders |
| BIN36-CR | CrewWare Bar Towel Merchandiser w/ Casters | 36"W x 30"H x 36"D | Chrome • Easily grab items such as bar towels with this easy to set up merchandiser • Included with qualifying prepaid bar towel orders |
| CRMERCH247 | 4 sided 4' x 2' Display Rack w/ Casters | 42" W x 72"H x 24"D | Displays Chef Revival 24/7 Crew Apparel • Great for merchandising a full line of products for the crew including jackets, pants, and hats • Included with qualifying prepaid stocking orders |



CREW APPAREL



JACKETS

Cool Crew
Cool Crew Fresh
Basic



SHIRTS

Cook Shirts



PANTS

Baggy Pants
Cook Pants



APRONS

Bistro Aprons
Bib Aprons



HEADWEAR

Chef Hats / Berets
Pill Box Hats
Scarf Hats



HOT LOOK / COOL CREW™

In today's new open kitchen environments, crew members need to look their best. Chef Revival 24/7® apparel offers the comfort and durability to stand up to long hours in hot environments and still be cool. Chef Revival 24/7® offers the perfect balance of value and quality crew apparel that Chef's can count on.





COOL CREW JACKETS



J049

Cool Crew Jackets

Upgrade the look of your crew and the image of your establishment.

- Thermometer/pen pocket
- Double breasted



J061BK

Cool Crew Fresh Jackets

Add some color to your crew's image with our new unisex Cool Crew Fresh Jackets

- Thermometer/pen pocket
- ¾ sleeves



J134SP

| Item | Description | Material | Button style |
|--------|---------------------------------|-------------------|--------------------|
| J134MT | Mint green jacket w/ black trim | Poly-cotton blend | Flat plastic black |
| J134ST | Steel gray jacket w/ black trim | Poly-cotton blend | Flat plastic black |
| J134SP | Spice jacket w/ black trim | Poly-cotton blend | Flat plastic black |
| J134WH | White jacket w/ black trim | Poly-cotton blend | Flat plastic black |
| J134TM | Tomato red jacket w/ black trim | Poly-cotton blend | Flat plastic black |

When ordering, add size code to item number XS, S, M, L, XL, 2X, 3X, 4X, 5X
Example: J134MT-XL

| Item | Description | Material | Button style |
|-----------------|--------------------------------|-------------------|--------------|
| J050 | White, long sleeve crew jacket | Poly-cotton blend | Cloth knot |
| J049 | White, long sleeve crew jacket | Poly-cotton blend | Clear pearl |
| new J149 | White, ¾ sleeve crew jacket | Poly-cotton blend | Clear pearl |
| J061BK | Black, long sleeve crew jacket | Poly-cotton blend | Black pearl |

When ordering, add size code to item number XS, S, M, L, XL, 2X, 3X, 4X, 5X Example: J049-XL



J149



Tomato

Spice

Mint

Steel

White



Flat plastic black button

Clear Pearl White

Clear Pearl Black

Cloth knot



J134MT



J134WH



CREW
JACKETS
& PANTS

Basic Jackets

- Double breasted basic Chef Jacket
- Thermometer/pen pocket
- Breast pocket



Clear pearl
White



| Item | Description | Material | Button style |
|------|---------------------------|-------------------|--------------|
| J100 | White long sleeve jacket | Poly-cotton blend | Clear pearl |
| J105 | White short sleeve jacket | Poly-cotton blend | Clear pearl |

When ordering, add size code to item number S, M, L, XL, 2X, 3X Example: J105-XL

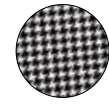


Baggy Pants

- Elastic waistband
- Zipper front with snap closure
- Two side pockets
- Two hip patch pockets



Black



Hounds Tooth

| Item | Description | Material | Closure |
|--------|--------------|-------------------|-------------------|
| P020HT | Hounds Tooth | Poly-cotton blend | Elastic waistband |
| P020BK | Black | Poly-cotton blend | Elastic waistband |

When ordering, add size code to item number XS, S, M, L, XL, 2X, 3X, 4X, 5X, 6X, 7X, 8X Example: P020HT-XL

Cook Shirts

- Lightweight Cook Shirts keep the line happy all night long



| Item | Description | Material | Button style |
|---------|-------------------------------|-------------------|--------------|
| CS006WH | White short sleeve cook shirt | Poly-cotton blend | Snap closure |
| CS006BK | Black short sleeve cook shirt | Poly-cotton blend | Snap closure |

When ordering, add size code to item number S, M, L, XL, 2X, 3X Example: CS006WH-XL



Classic White Cook Pants

- Elastic waistband
- Zipper front with snap closure
- Two side pockets
- Two hip patch pockets

| Item | Description | Material |
|---------|-------------|-------------------|
| P201CPZ | White pants | Poly-cotton blend |

Available waist sizes: 30", 32", 34", 36", 38", 40", 42", 44", 46"

When ordering, add size code to item number Example: P201CPZ-30



CREW
APRONS and
HEADWEAR



Bistro Aprons

| Item | Description | Size |
|-------|----------------|-----------|
| 402WA | White, 2 sided | 33" x 30" |
| 403FW | White, 4 sided | 30" x 16" |

Pill Box Hats

| Item | Color | Material | Sizes |
|------|------------------------|-------------------|-------|
| H002 | White | Poly-cotton blend | R-2X |
| H008 | Black | Poly-cotton blend | R-2X |
| H009 | Hounds Tooth | Poly-cotton blend | R-XL |
| H014 | Black/White Pin Stripe | 100% cotton | R-XL |
| H017 | Blue/Gray Soho Stripe | 100% cotton | R-XL |
| H032 | Pink | 100% cotton | R-XL |
| H042 | Claret | 100% cotton | R-XL |
| H044 | Pepper Print | 100% cotton | R-XL |
| H047 | Red/Gray Soho Stripe | 100% cotton | R-XL |
| H065 | Light Blue | 100% cotton | R-XL |
| H066 | Canary Yellow | 100% cotton | R-XL |

When ordering, add size code to item number
R, XL, 2X Example: H002-XL

Hat Sizes: R = 20"-22" XL = 22"-23½" 2X = 23½"-25"



H032



Bib Aprons

| Item | Description | Size |
|----------|---|-----------|
| 401BA | White, front pocket w/ adjustable neckstrap | 25" x 34" |
| 401BA-NP | White, no pocket w/ adjustable neckstrap | 25" x 34" |

401BA



H036BK



H036WH

Chef Berets

| Item | Color | Material |
|--------|-------|-------------------|
| H036WH | White | Poly-cotton blend |
| H036BK | Black | Poly-cotton blend |



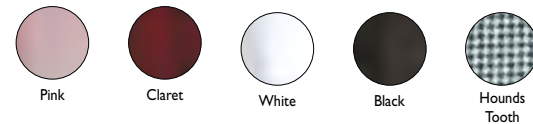
CREW
HEAD
WEAR

Scarf Hats



H020HT

| Item | Color | Material |
|---------|--------------|-------------|
| H020BK | Black | 100% cotton |
| H020HT | Hounds Tooth | 100% cotton |
| H023WH | White | 100% cotton |
| H033PK | Pink | 100% cotton |
| H039CLT | Claret | 100% cotton |



Chef Hats



H400WH



CH-EURO



H049



H051

| Item | Description | Material |
|---------|----------------------------|----------------------|
| H400WH | White 13" chef hat | Poly-cotton blend |
| H400BK | Black 13" chef hat | Poly-cotton blend |
| H400RD | Red 13" chef hat | Poly-cotton blend |
| CH-EURO | White 10" pleated chef hat | Poly-cotton blend |
| H048 | 7" pin-stripe hat | Re-usable/disposable |
| H049 | 8½" pin-stripe hat | Re-usable/disposable |
| H050 | 8" plain hat | Re-usable/disposable |
| H051 | 6¾" plain hat | Re-usable/disposable |

Neckerchiefs/Bandanas



CB007

| Item | Description | Material |
|--------|-------------------|-------------------|
| H500WH | White neckerchief | Poly-cotton blend |
| H500BK | Black neckerchief | Poly-cotton blend |
| H500RD | Red neckerchief | Poly-cotton blend |
| CB007 | Chef logo bandana | 100% cotton |

Baseball Caps CUSTOM EMBROIDERED

Requirements:

- Minimum 48 caps (same color)
- Your logo submitted in any of the following formats: EPS, TIFF, PDF, JPEG
- 2 week lead time
- Embroidered caps limited to 1 logo or 2 lines of embroidery
- Available for purchase without embroidery

One size fits all / Adjustable back

Your choice of 8 color caps



H067





CREW TOOLS

APRONS



- Serving
- Cooking
- Dishwashing
- Cleaning

HAND SAFETY



- Heat
- Cold
- Cut

TOWELS



- Bar
- Kitchen
- Serving

FOOD TRANSPORT



- Hot
- Cold

DISPOSABLES



- Hats
- Aprons

TOOLS YOU CAN TRUST

As the leading supplier to the food service industry, CrewWare® offers the largest range of products for the crew under one brand! Tools you can count on to provide the ultimate in safety, comfort, durability and value. With an incredible offering of essential products, and nearly 100 years of experience, you can trust CrewWare® to provide unequalled coverage for the kitchen crew!

Waist Aprons



Professional Waist Apron
605WAFH



3-Pocket Waist Apron
605PS-BK



4-Way Apron
603FW



4-Way Apron
603FWPS-BK



Reversible Waist Apron
605REV-BK



605WAFH COLORS
 WH WHITE, BK BLACK, BG BUR-GUNDY, BR BROWN, HG HUNTER GREEN, GN KELLY GREEN, NV NAVY, RB ROYAL BLUE, RD RED, SP SPICE, KH KHAKI, MT MINT

| Item | Description | Colors | Materials | Features | Size |
|------------|--------------------------|--------------|---------------------|---|-----------|
| 605WAFH* | Professional Waist Apron | See Swatches | Poly-cotton blend | 3-compartment front pocket | 23" x 12" |
| 605PS-BK | 3-Pocket Waist Apron | Black | 100% spun polyester | 3-compartment front pocket | 24" x 12" |
| 603FW | 4-Way Apron | White | Poly-cotton blend | Wears and folds 4 ways to keep fresh & clean | 34" x 17" |
| 603FWPS-BK | 4-Way Apron | Black | 100% spun polyester | Wears and folds 4 ways to keep fresh & clean | 28" x 17" |
| 605REV-BK | Reversible Waist Apron | Black | Poly-cotton blend | 3 pockets on both sides • Keeps staff fresh & clean | 24" x 12" |

* Specify color choice after item number Example: 605WAFH-WH

Bistro Aprons

When you need to look good.

These premium quality aprons have extra long self-ties to make you look and feel your best.



Bistro Apron
607BA-BK



Half Bistro Apron
607HBA2



Bistro Apron
No Pocket
607PS-BK
With One Side Pocket
607PSI-BK



| Item | Description | Colors | Materials | Features | Size |
|-----------|---------------------------|---------------|---------------------|---|-----------|
| 607BA* | Bistro Apron (One pocket) | White • Black | Poly-cotton blend | One side pocket • Extra long self-ties | 33" x 30" |
| 607BA2* | Bistro Apron (Two pocket) | White • Black | Poly-cotton blend | Two middle pockets • Extra long self-ties | 28" x 34" |
| 607HBA2* | Half Bistro Apron | White • Black | Poly-cotton blend | Two center pockets • Includes fashion self-ties | 28" x 19" |
| 607PS-BK | Bistro Apron | Black | 100% spun polyester | No pocket | 28" x 34" |
| 607PSI-BK | Bistro Apron | Black | 100% spun polyester | One side pocket | 28" x 34" |

* Specify color choice after item number Example: 607BA-BK

Bib Aprons



**Professional
Bib Apron**
602BAFH



**Full Length
Bib Apron**
601BAC

602BAFH/601BAC COLORS



| Item | Description | Materials | Features | Size |
|----------|------------------------|-------------------|----------------------------|-----------|
| 602BAFH* | Professional Bib Apron | Poly-cotton blend | 3-compartment front pocket | 28" x 25" |
| 601BAC* | Full Length Bib Apron | Poly-cotton blend | 8" x 8" side pocket | 28" x 34" |

* Specify color choice after item number Example: 602BAFH-WH

Our most popular colored aprons!

These popular aprons are made with high quality blended deluxe fabric. They are colorfast and are made with matching, non-tangle colored ties. You can count on CrewWare® aprons to perform time after time!

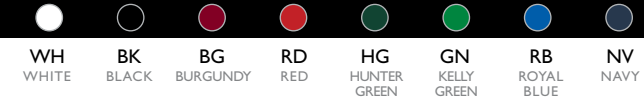


**Adjustable
3-Pocket Bib Apron**
612BAFH



**Gourmet Professional
Full Length Bib Apron**
601BAO-3

612BAFH/601BAO-3 COLORS



| Item | Description | Materials | Features | Size |
|-----------|--|-------------------|--|-----------|
| 612BAFH* | Adjustable 3-Pocket Bib Apron | Poly-cotton blend | 3-lower pockets • Adjustable neckband | 28" x 27" |
| 601BAO-3* | Gourmet Professional Full Length Bib Apron | Poly-cotton blend | 3-compartment pocket • Adjustable neckstrap clip | 28" x 30" |

* Specify color choice after item number Example: 612BAFH-WH

Bib Aprons



**3-Pocket
Bib Apron**
602PS-BK



**No Pocket
Bib Apron**
600PS-NP-BK



**Tuxedo
(V-Neck) Apron**
VNA3840-BK



Cobbler Apron
625CBA

625CBA COLORS



| Item | Description | Color | Materials | Features | Size |
|-------------|---------------------|-------|---------------------|---------------------|-----------|
| 602PS-BK | 3-Pocket Bib Apron | Black | 100% spun polyester | Three lower pockets | 28" x 25" |
| 600PS-NP-BK | No Pocket Bib Apron | Black | 100% spun polyester | No pockets | 28" x 32" |

| Item | Description | Color | Materials | Features | Size |
|------------|-----------------------|--------------|-------------------|--|-----------|
| VNA3840-BK | Tuxedo (V-Neck) Apron | Black | 100% cotton | Adjustable neck straps • Extra long self-ties • 2-compartment front pocket | 30" x 40" |
| 625CBA* | Cobbler Apron | See Swatches | Poly-cotton blend | Adjustable ties • 2-compartment front pocket | 19" x 28" |

* Specify color choice after item number Example: 625CBA-BK

Utility Economy Aprons

When you need practicality.

Cost effective and hard working, these economical utility aprons combine durability with distinctive style. You can keep costs down and productivity high.



**White Economy
Bib Apron (No Pocket)**
600BAW-NP



**White Economy
Bib Apron (Pencil Pocket)**
600BAW (shown)
610BAC



**Extra Wide
White Bib Apron**
600BAW-XL



Bib Apron
600PS-PP (shown)
600PS-NP

| Item | Description | Materials | Features | Size |
|-----------|-------------------------|-------------------|---------------------------------------|-----------|
| 600BAW-NP | White Economy Bib Apron | Poly-cotton blend | No pocket • Great for screen printing | 34" x 34" |
| 600BAW | White Economy Bib Apron | Poly-cotton blend | Pencil pocket | 34" x 34" |
| 610BAC | White Economy Bib Apron | 100% cotton | Pencil pocket | 37" x 40" |

| Item | Description | Materials | Features | Size |
|-----------|----------------------------|---------------------|--|-----------|
| 600BAW-XL | Extra Wide White Bib Apron | Poly-cotton blend | Pencil pocket • A great combination of size, convenience and quality | 38" x 30" |
| 600PS-PP | Bib Apron (White) | 100% spun polyester | Pencil pocket | 28" x 34" |
| 600PS-NP | Bib Apron (White) | 100% spun polyester | No pocket | 28" x 34" |
| 600BAW-D | Deluxe White Bib Apron | Poly-cotton blend | Pencil pocket • Durable self-ties | 34" x 34" |

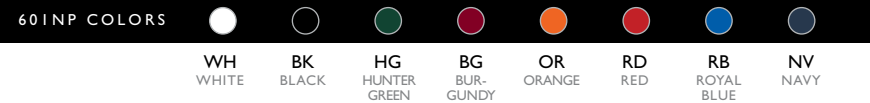
Institutional Aprons



**Neo-Flex™
Bib Apron**
615NBA-Y

**Institutional
Majesty
Bib Apron**
601MAJ-BK

**No Pocket
Bib Apron**
601NP



| Item | Description | Color | Materials | Features | Size |
|-----------|---------------------------------|-------------------------|-------------------|--|-----------|
| 615NBA* | Neo-Flex™ Bib Apron | (Y) Yellow (B) Black | Neo-Flex™ | Heat resistant, fire-retardant • Durable and cut resistant • Liquid repellent • Excellent grease barrier • Adjustable neck strap | 29" x 43" |
| 601MAJ-BK | Institutional Majesty Bib Apron | (B) Black | Polyester | Excellent durability and liquid protection • Vinyl backed for enhanced protection • Waterproof and fire retardant | 28" x 34" |
| 601NP* | No Pocket Bib Apron | See Swatches | Poly-cotton blend | No pockets | 28" x 34" |

* Specify color choice after item number Example: 615NBA-Y

Splash Resistant Aprons



**Vinyl Dish
Washing Apron**
614DVA-BL

20 mil Vinyl Apron
614DVA20-GN

**Economy Brown
Vinyl Bib Apron**
604VBA-E

Vinyl Bib Apron
604VBA-BR

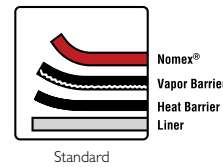
| Item | Description | Color / Options | Materials | Features | Size |
|-------------|--------------------------|--|-----------------------------------|--|-----------|
| 614DVA* | Vinyl Dish Washing Apron | White, 6 mil • White, 8 mil Blue, 8 mil • Clear, 12 mil | Institutional grade quality vinyl | Includes heavy duty braided ties | 36" x 43" |
| 614DVA20* | 20 mil Vinyl Apron | Green • White | Institutional grade quality vinyl | Protects against fats, liquids and abrasions Extra long ties for added comfort. | 36" x 45" |
| 604VBA-E | Economy Vinyl Bib Apron | Brown | Vinyl | A great look for a very affordable price | 25" x 28" |
| 604VBA-BR | Vinyl Bib Apron | Brown | Vinyl | Heavyweight • Waterproof and fire-retardant | 25" x 28" |
| 604VBA37-BR | Vinyl Bib Apron (Long) | Brown | Vinyl | Heavyweight • Waterproof and fire-retardant | 25" x 37" |

* Specify color choice and options after item number Example: 614DVA-WH-6

Oven Mitts

KOOL-TEK®

INSULATION LAYERS



Ultra high performance, non-combustible Nomex® and Kevlar® construction can handle even the most difficult kitchen environment.

Insulation protection:
Nomex® to 450°F
Kevlar® to 1000°F

100% Kevlar® protection around entire edge perimeter.



Conventional Mitt w/ Kevlar®

- KT0212 (12")
- KT0215 (15")
- KT0218 (18")
- KT0224 (24")

Puppet Mitt w/ Kevlar®

- KT0112K (12")
- KT0115K (15")
- KT0118K (18")
- KT0124K (24")

Standard Puppet Mitt

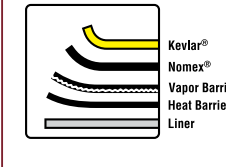
- KT0112 (12")
- KT0115 (15")
- KT0118 (18")

| Item | Description | Length | Features |
|----------------|------------------------------|-----------------------|---|
| KT01*(length)K | Puppet Mitt w/ Kevlar® | 12" • 15" • 18" • 24" | Multiple layer technology outperforms most leading products in high heat situations • Thick inner insulation in Oven Mitts protects hands from heat related injuries. • Extreme service construction outlasts most other similar products • Conventional Mitt offers full Kevlar edge protection • Meets OSHA codes 1910.132 and 1910.138 |
| KT01*(length) | Standard Puppet Mitt | 12" • 15" • 18" | |
| KT02*(length)K | Conventional Mitt w/ Kevlar® | 12" • 15" • 18" • 24" | |

* Specify desired length in item number Example: KT01-12-K

THERMO-PROTECT™

INSULATION LAYERS



Constructed with non-combustible Nomex® outer shell and Kevlar® heat surface protection.

Insulation protection:
Nomex® to 450°F
Kevlar® to 1000°F

Kevlar® protection in gusset.



Conventional Mitt

- OMN15 (15")
- OMN18 (18")

Puppet Mitt

- OMNP15 (15")
- OMNP18 (18")

| Item* | Description | Length | Features |
|-------|---------------------------------|-----------|---|
| OMN* | Conventional Mitt w/ Kevlar® | 15" • 18" | Excellent protection for high heat and flame applications • Heavy wool heat barrier for strong heat protection • Steam barrier protects against steam and moisture burns • Meets OSHA codes 1910.132 and 1910.138 |
| OMNP* | Standard Puppet Mitt w/ Kevlar® | 15" • 18" | |

* Specify desired length after item number Example: OMN-15

Kool-Tek® premium line of heat protection oven mitts offer your kitchen personnel protection from heat related injuries, from hands to arms to frontal body.

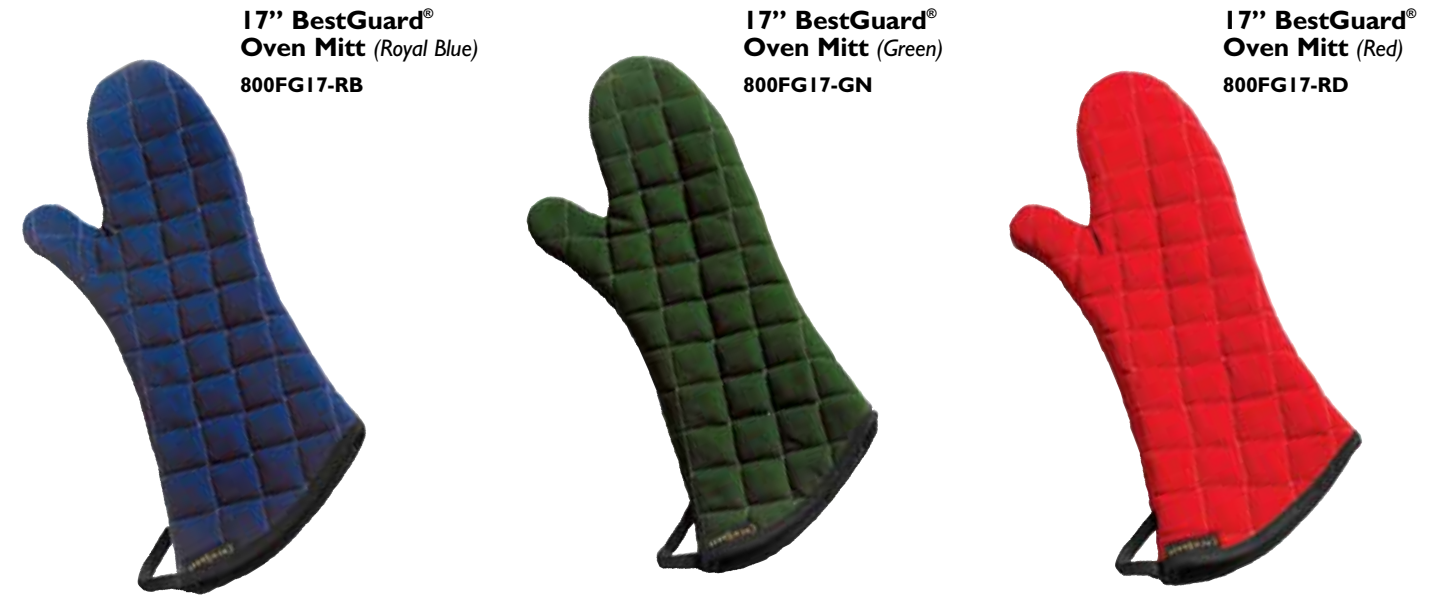
Thermo Protect™ oven mitts are made with a great combination of Nomex® and Kevlar® to offer the user significant heat, flame and steam protection. Heavy duty construction stands up to repeated commercial washings while still offering first rate value.

Oven Mitts

EXCLUSIVE
BESTGUARD[®]
WITH **WEBGUARD**[™]
PROTECTION

Our WebGuard[™] gusset provides added protection between your thumb and forefinger and features:

- Superior insulation protection
- Stitching that will not rub or irritate
- An inner double layer of lining for comfort
- Inner layer of heat protection that stays in place due to tight quilted stitching



17" BestGuard[®] Oven Mitt (Royal Blue)
800FG17-RB

17" BestGuard[®] Oven Mitt (Green)
800FG17-GN

17" BestGuard[®] Oven Mitt (Red)
800FG17-RD

| Item | Description | Color | Length | Features |
|--------|----------------------------------|-------------|-----------------------|---|
| 800FG* | BestGuard [®] Oven Mitt | Tan • Black | 13" • 15" • 17" • 24" | Protects up to 450°F • Fire-retardant • WebGuard [™] for extra comfort, protection and dexterity • Wipes clean with damp cloth |

* Specify length and color choice after item number Example: 800FG-13-BK

| Item | Description | Color | Length | Features |
|------------|----------------------------------|---------------------------|--------|---|
| 800FG17* | BestGuard [®] Oven Mitt | Royal Blue Red • Green | 17" | Protects up to 450°F • Fire-retardant • Wipes clean with damp cloth |
| 850TF15-GY | "Tri-Flex" Oven Mitt | Grey | 15" | Protects up to 400°F • Ambidextrous • Wool/cotton inner lining • Machine washable |
| 850TF17 | "Tri-Flex" Oven Mitt | Tan | 17" | Protects up to 400°F • Fire-retardant Bestguard [®] fabric • True finger dexterity |

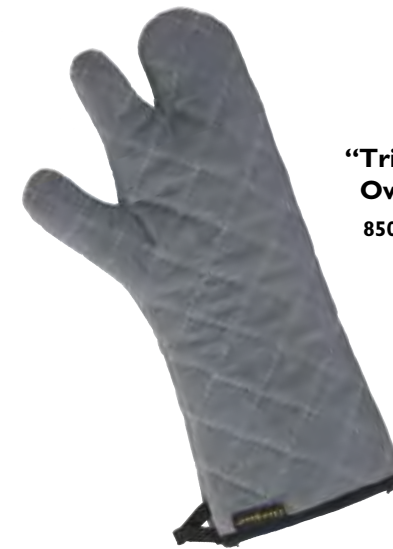
* Specify color choice after item number Example: 800FG17-RB



BestGuard[®] Oven Mitts
Tan:
800FG13
800FG15
800FG17
800FG24



BestGuard[®] Oven Mitts
Black:
800FG13-BK
800FG15-BK
800FG17-BK
800FG24-BK



"Tri-Flex"[®] Oven Mitt
850TF15-GY



"Tri-Flex"[®] Oven Mitt
850TF17

Oven Mitts



Silicone Oven/Freezer Mitts
801SG13
801SG15
801SG17



Bestan® Oven Mitts
811TG13
811TG15
811TG17



Grey Wool Oven Mitt
OM17-GYW



Terry Oven Mitts
813TM
817TM
817TM-BR
824TM
With Steam Barrier
813TM-SB
817TM-SB



Oven Mitt with Kevlar®
KM15 (15")
KM17 (17")



Chili Pepper Print Oven Mitt
OMNOV13-CP

| Item | Description | Length | Features |
|-----------------|----------------------------|-----------------|--|
| 801SG* | Silicone Oven/Freezer Mitt | 13" • 15" • 17" | Protects up to 400°F • Non-stick coating • Works well with hot or cold surfaces |
| 811TG* | Bestan® Oven Mitt | 13" • 15" • 17" | Protects up to 400°F • Non-stick Bestan® coating • Excellent value |
| OM17-GYW | Grey Wool Oven Mitt | 17" | Protects up to 450°F • Made of 100% cotton exterior with wool interior • Includes extra insulation for maximum heat protection |

* Specify desired size after item number Example: 801SG-13

| Item | Description | Length | Features |
|-------------------|---|-----------|--|
| 813TM | Terry Oven Mitt (<i>Natural</i>) | 13" | Protects up to 500°F • Made of heavy-duty institutional grade terry • Machine washable |
| 817TM | Terry Oven Mitt (<i>Natural</i>) | 17" | Protects up to 500°F • Made of heavy-duty institutional grade terry • Machine washable |
| 817TM-BR | Terry Oven Mitt (<i>Brown</i>) | 17" | Protects up to 500°F • Made of heavy-duty institutional grade terry • Machine washable |
| 824TM | Terry Oven Mitt (<i>Natural</i>) | 24" | Protects up to 500°F • Made of heavy-duty institutional grade terry • Machine washable |
| 813TM-SB | Terry Oven Mitt (<i>w/ Steam Barrier</i>) | 13" | Protects up to 500°F • Made of heavy-duty institutional grade terry • Machine washable |
| 817TM-SB | Terry Oven Mitt (<i>w/ Steam Barrier</i>) | 17" | Protects up to 500°F • Made of heavy-duty institutional grade terry • Machine washable |
| KM* | Oven Mitt with Kevlar® | 15" • 17" | Protects up to 500°F • Flame retardant Kevlar® up to 900°F • Machine washable |
| OMNOV13-CP | Chili Pepper Print Oven Mitt | 13" | Protects up to 400°F • Made of 100% cotton w/ fleece lining • Machine washable |

* Specify desired size after item number Example: KM-15

Specialty Gloves



Fryer Oven Mitt
6786RMT (14")
6786RMT-XL (16")



Rotissi-Glove
T1212 (12")
T1217 (17")



Terry Baker Glove
667 (24 oz.)
667-HVY (28 oz.)



Hot Mill Knit Glove
ML5000 (29 oz.)



Frozen Food Gloves
FGI-OR



Freezer Glove
20PD

| Item | Description | Size / Length | Materials | Features |
|----------|--------------------------------|-------------------|------------------------|--|
| 6786RMT* | Fryer Oven Mitt | 14" • 16" (XL) | Neoprene® rubber | Protects up to 500°F • Fully insulated • USDA accepted |
| T12* | The Rotissi-Glove | 12" • 17" | Neoprene® rubber | Protects up to 500°F • Fully insulated • USDA accepted |
| 667 | Terry Baker Glove | One size fits all | Heavy duty terry cloth | Protects up to 250°F • Fits either hand • Machine washable |
| 667-HVY | Terry Baker Glove (Heavy Duty) | One size fits all | Heavy duty terry cloth | Protects up to 350°F • Fits either hand • Machine washable |

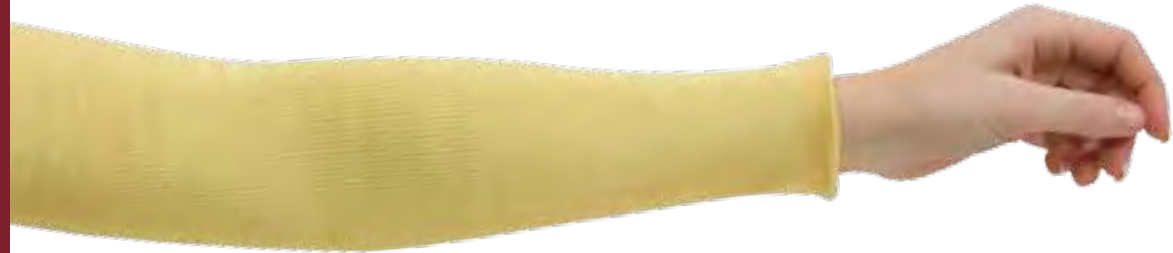
* Specify desired size after item number Example: 6786RMT-14

| Item | Description | Size / Length | Materials | Features |
|--------|---------------------|-------------------|--|---|
| ML5000 | Hot Mill Knit Glove | One size fits all | Heavy duty terry cloth | Protects up to 400°F • Most heat protective terry cloth glove |
| FGI-OR | Frozen Food Glove | One size fits all | PVC with cotton jersey liner | Protects against temperatures as low as 0°F • Foam lining and knit wrist provide great insulation from cold temperatures • Safety cuff allows gloves to slide on and off easily |
| 20PD | Freezer Glove | One size fits all | Rubber dipped, with Thinsulate™ lining | Protects against temperatures as low as -30°F • Contains Thinsulate™ lining for maximum protection against cold temperatures • Laminated for ideal gripping |

Sleeves



Terry Sleeve
SLWT16



Kevlar Sleeve
SLK16

| Item | Description | Length | Materials | Features |
|--------|---------------------------|--------|-------------------|---|
| SLWT16 | Terry Sleeve | 18" | 100% cotton terry | Protects up to 350°F • Machine washable |
| SLK16 | Kevlar Sleeve | 18" | Kevlar | Flame retardant up to 900°F • Machine washable |
| KT0401 | KoolTek Protective Sleeve | 18" | Nomex | Protects up to 450°F • Meets OSHA codes 1910.132 and 1910.138 |



KoolTek Protective Sleeve
KT0401

Handle Holders



BestGuard Handle Holders
804BG (Tan)
804BG-BK (Black)



Wool/Heavy Duty Handle Holder
804HH-RW



Terry Handle Holder
805THH

| Item | Description | Size | Materials | Features |
|----------|---------------------------------|--------------|--------------------|---|
| 804BG | BestGuard Handle Holder (Tan) | 3.25" x 6.5" | BestGuard | Protects up to 400°F • Quilted fire-retardant |
| 804BG-BK | BestGuard Handle Holder (Black) | 3.25" x 6.5" | BestGuard | Protects up to 400°F • Quilted fire-retardant |
| 804HH-RW | Wool/Heavy Duty Handle Holder | 2.75" x 6.5" | Wool | Protects to 450°F • Contains extra insulation • Additional wool layer for superior protection |
| 805THH | Terry Handle Holder | 3.5" x 6.5" | Terry cloth | Protects up to 400°F |
| KT0601 | Kool-Tek Handle Cover | 2" x 5" | Nomex | Protects up to 450°F • High performance, non-combustible Nomex • Meets OSHA codes 1910.132 and 1910.138 |
| KT0602 | Kool-Tek Handle Cover | 2" x 7" | Nomex | Protects up to 450°F • High performance, non-combustible Nomex • Meets OSHA codes 1910.132 and 1910.138 |
| 804CP | Chili Pepper Handle Holder | 3.25" x 5.5" | Cotton / BestGuard | Protects up to 400°F • A wonderful product for fajita use • 100% cotton exterior and thick flame-resistant black BestGuard interior |
| 804HH | Bestan Handle Holder (Tan) | 3.25" x 6.5" | Quilted Bestan | Protects to 350°F • Bestan quilted insulated interior |



KoolTek Pot Handle Cover
KT0601 (5")
KT0602 (7")



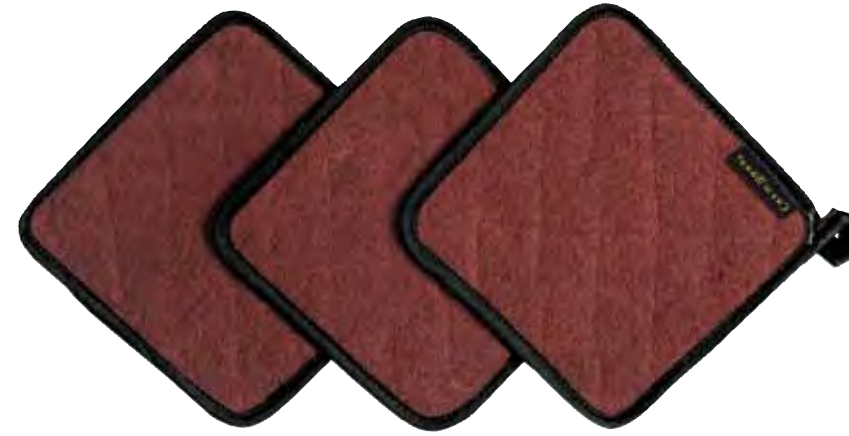
Chili Pepper Handle Holder
804CP



Bestan Handle Holder
804HH (Tan)

Pot Holders

Kool-Tek® Hot Pad
KT0301 (w/ pocket)
KT0302 (w/o pocket)
KT0301K (Kevlar® w/o pocket)



Terry Cloth Pot Holder
802TPH



Round Pot Holder
813RPH

| Item | Description | Size | Materials | Features |
|---------|--|-------------|----------------------------------|---|
| KT0301 | KoolTek® Hot Pads (with pocket) | 8.5" x 8.5" | Nomex® | Protects up to 450°F • Made of high performance, non-combustible Nomex® Meets OSHA codes 1910.132 and 1910.138 |
| KT0301K | KoolTek® Hot Pads (Kevlar® without pocket) | 8.5" x 8.5" | Nomex® / Kevlar® | Protects up to 450°F • Flame retardant Kevlar® protects up to 1000°F • Steam barrier protects against steam and moisture burns • Meets OSHA codes 1910.132 and 1910.138 |
| KT0302 | KoolTek® Hot Pads (without pocket) | 8.5" x 8.5" | Nomex® | Protects up to 450°F • Made of high performance, non-combustible Nomex® Meets OSHA codes 1910.132 and 1910.138 |
| 802TF | BestGuard® Terry Pot Holder | 8" x 8" | Quilted BestGuard® / Terry cloth | Protects up to 500°F • Fire-retardant BestGuard® on one side, heat protective terry on the other |
| 802BG | Tan BestGuard® Pot Holder | 7" x 7" | Quilted BestGuard® | Protects up to 450°F • Fire-retardant • Wipes clean with damp cloth • The ultimate in heat protection |

| Item | Description | Size | Materials | Features |
|-----------|-------------------------|---------|-----------------------------|---|
| 802TPH | Terry Pot Holder | 8" x 8" | Institutional grade terry | Protects up to 500°F • Maximum heat protection • Machine washable |
| 813RPH | Round Pot Holder | 8" x 8" | 100% cotton terry cloth | Protects up to 400°F • Double thick, institutional quality • Machine washable |
| 802SPH | Silicone Pot Holder | 7" x 7" | Quilted silicone coating | Protects up to 350°F • Non-stick material |
| 812TPH | Bestan® Pot Holder | 7" x 7" | Quilted Bestan® coating | Protects up to 350°F • Non-stick |
| 802SPH-CP | Chili Pepper Pot Holder | 7" x 7" | Quilted w/ silicone coating | Protects up to 350°F • Non-stick and quilted |



BestGuard® Terry Pot Holder
802TF



Tan BestGuard® Pot Holder
802BG



Silicone Pot Holder
802SPH



Bestan® Pot Holder
812TPH



Chili Pepper Pot Holder
802SPH-CP

Kevlar® and Nomex® are registered trademarks of Dupont.

Pan Grabbers



Pan Grabber
(Baker's Pad with Wrist Strap)
803PG
803PG-Your Logo (imprint)



Junior Pan Grabber
(Baker's Pad with Pocket)
845PG



Thermo Protect™ Pan Grabber
NGPG-11

| Item | Description | Size | Materials | Features |
|----------------|---|------------|----------------------|---|
| 803PG* | Pan Grabber <i>(Baker's pad w/ Wrist Strap)</i> | 9.5" x 11" | Bestex / Terry cloth | Protects up to 400°F • Extra-thick layer of terry cloth outside with a "Bestex" interior • Machine washable |
| 845PG | Junior Pan Grabber <i>(Baker's pad w/ Pocket)</i> | 6" x 8" | Canvas | Protects up to 350°F • Pouch pocket provides for easy on and off usage • Machine washable |
| NGPG-11 | Thermo Protect™ Pan Grabber | 8.5" x 11" | Nomex | Insulation value up to 450°F • Wool interior for max heat protection • Meets OSHA best protection codes 1910.32 and 1910.38 |
| 835PG | Pan Grabber <i>(Baker's Pad w/ Slit)</i> | 10" x 11" | Terry cloth | Protects up to 500°F • Hemmed slit • A popular laundry rental item • Extra large size • Machine washable |
| 823TPH | Terry Cloth Pan Grabber <i>(Baker's Pad)</i> | 10" x 11" | Terry cloth | Protects up to 500°F Extra large size • Machine washable |

* For imprinted version please call customer service for your personalized logo item number



Pan Grabber
(Baker's Pad w/ slit)
835PG



Terry Cloth Pan Grabber
(Baker's Pad)
823TPH

Server Gloves



White Waiter's Glove
5312-WH-M
5312-WH-L

| Item | Description | Size | Materials | Features |
|-----------------|---|-------------------|--------------|---|
| 5312-WH* | White Waiter's Glove | M, L | Cotton / PVC | Palm dotted for additional grip ability |
| IG100 | White <i>(Event)</i> Server Glove <i>(Parade/Inspector)</i> | One size fits all | 100% cotton | Very economical |

* Specify desired size after item number Example: 5312-WH-M



White *(Event)* Server Glove
(Parade/Inspector)
IG100

Dishwashing / Utility

For all wet handling needs, our wide range of Neoprene® and Rubber gloves have you covered!



**31" Neoprene®
Shoulder Length Glove**
P31



PVC Pot & Sink Dishwashing Glove

884 (14")
887 (18" - elbow length, shown)

| Item | Description | Materials | Features | Size |
|------|-------------------------------------|--------------|--|-------------------|
| P31 | 31" Neoprene® Shoulder Length Glove | Neoprene® | Protects to 185°F • Seamless one piece outside construction Provides full arm protection | One size fits all |
| 884 | PVC Pot & Sink Dishwashing Glove | PVC / cotton | Protects to 185°F • Interior cotton interlock lining for additional protection • "Rough-Grip" construction for improved handling | 14" Length |
| 887 | PVC Pot & Sink Dishwashing Glove | PVC / cotton | Protects to 185°F • Interior cotton interlock lining for additional protection • "Rough-Grip" construction for improved handling | 18" Length |



**Neoprene®
Dishwashing Glove**

1214 (14")
1217EL (17" - Elbow Length)



**Neoprene®
Flock Lined Glove**

238SF-M
238SF-L

| Item | Description | Materials | Features | Size |
|--------|-----------------------------------|-------------------|--|----------------------|
| 1214 | Neoprene® Dishwashing Glove | Neoprene® | Protects to 200°F • One piece construction • Jersey lined for extra heat protection • Coated with marvelous heat resistant and liquid-proof Neoprene® rubber • Rough grip for safer and easier dish handling | 14" Length |
| 1217EL | Neoprene® Dishwashing Glove | Neoprene® | Protects to 200°F • One piece construction • Jersey lined for extra heat protection • Coated with marvelous heat resistant and liquid-proof Neoprene® rubber • Rough grip for safer and easier dish handling | 17" Length |
| 238SF* | Neoprene® Flock Lined Glove | Neoprene® | Protects to 185°F • The benefit of heat resistant Neoprene® at an economy price • Embossed grip • 33 mil thickness | 15.5" Length M, L |
| BY12* | Neoprene®/Latex Flock Lined Glove | Neoprene® / latex | Protects to 185°F • Very protective, thick and tough • Embossed grip USDA accepted • 28 mil thickness | S, M, L, XL |
| R93517 | Heavy Duty Rubber Glove | Natural rubber | Protects to 185°F • Comfortable and flexible • Rolled cuff and embossed grip • Not intended for electrical use • Unlined • Orange interior | 17" Length |

* Specify desired size after item number Example: 238SF-M



**Neoprene®/Latex
Flock Lined Glove**

BY12-S
BY12-M
BY12-L
BY12-XL



**Heavy Duty
Rubber Glove**

R93517

Nitrile / Flocked

Medium duty gloves at the right price for all dishwashing needs



Nitrile Flock Lined Glove

13NU-M
13NU-L



Nitrile Dishwashing Glove

19NU-S
19NU-M
19NU-L
19NU-XL

| Item | Description | Materials | Features | Size |
|-------|---------------------------|------------------------|---|---------------------------|
| 13NU* | Nitrile Flock Lined Glove | Nitrile rubber / flock | Protects to 195°F • Super tough, flexible and heat resistant • Component materials comply with FDA regulations pertaining to food contact • Embossed grip • 15 mil thick flock lining | 13" Length M, L |
| 19NU* | Nitrile Dishwashing Glove | Nitrile rubber | Protects to 185°F • Super tough, flexible and heat resistant • Unlined • USDA accepted • Elbow length • 25 mil thickness | 19" Length S, M, L, XL |

* Specify desired size after item number Example: 13NU-M



Yellow Latex Flock Lined Glove

620



Blue Latex Flock Lined Glove

12NF



Orange Flock Lined Glove

720

| Item | Description | Materials | Features | Size |
|---------|--------------------------------|-------------------------|---|-----------------------------|
| 620* | Yellow Latex Flock Lined Glove | Latex / flock | General purpose glove • Flock lined, embossed grip • For use anywhere from the food service industry to janitorial • USDA accepted • 22 mil thickness | S, M, L, XL |
| 12NF* | Blue Latex Flock Lined Glove | Latex / flock | Embossed grip • Component materials comply with FDA regulation on food contact • USDA accepted • 22 mil thickness | 12.5" Length S, M, L, XL |
| 720* | Orange Flock Lined Glove | Neoprene® & latex blend | Extra thick and durable • Embossed grip • USDA accepted 28 mil thickness | S, M, L, XL |
| 6R-2000 | "Rack 'Em" Glove Rack | Steel / PVC coating | Allows for quicker drying time • Rust resistant, black PVC coating over a heavy-duty galvanized steel • Wall mountable | 14" Height |

* Specify desired size after item number Example: 620-S



"Rack 'Em" Glove Rack

6R-2000

Cut Resistant

Hand safety has never been better! Keep hands safer with these flexible gloves. They work as a “second skin”, allowing the user to “feel” the task yet still remain protected from cuts. No more floppy gloves getting in the way of the job at hand!



Spectra® Cut-Resistant Glove
with exclusive Double Guard™
Anti-Microbial Agent
SG10

Wrist band stitching color indicates glove size::



- S** = red
- M** = green
- L** = white
- XL** = black



SG10-BL

Blue is used for fish



SG10-RD

Red is used for meat



SG10-GN

Green is used for produce



SG10-Y

Yellow is used for poultry

| Item | Description | Color | Size | Materials | Features |
|--------------|---|---|-------------|-------------------------|---|
| SG10* | Spectra® Cut-Resistant Gloves with exclusive Double Guard™ Anti-Microbial Agent | White (WH) | S, M, L, XL | Spectra® composite yarn | 11" length • Excellent dexterity and comfort • State of the art Spectra® combined with optical glass core offers 30% more cut-resistance than stainless-steel fiber gloves • Glove fits either hand • Machine washable • Meets OSHA standard (29 CFR) 1910.132 • Tested in accordance with ASTM Spec 177.20 |
| | | Blue (BL) Green (GN) Red (RD) Yellow (Y) | S, M, L | | |

* Specify desired color and size after item number Example: SG10-WH-S

Cut Resistant



Cut-Resistant Butcher Glove with exclusive Double Guard™ Anti-Microbial Agent
(contains stainless steel fiber)

PBS301

D-Flex® Cut Resistant Glove

DFG1000

| Item | Description | Size | Materials | Features |
|----------------|---|-----------------|------------------------------|--|
| PBS301 | Cut-Resistant Butcher Glove with exclusive Double Guard™ Anti-Microbial Agent <i>(contains stainless steel fiber)</i> | XS, S, M, L, XL | Stainless steel / nylon cord | Ambidextrous • Comes with a free cotton liner • Meets OSHA standard (29 CFR) 1910.132-138 • Tested in accordance with ASTM Spec 177.20 • "Aegis" technology prevents wire breakage after machine washing |
| DFG1000 | D-Flex® Cut Resistant Glove | S, M, L, XL | Spectra® composite yarns | Ambidextrous • 10-gauge seamless knit • In compliance with 21CFR, 170-199 • Low cost, yet very effective |



The Dura-Grab Cut-Resistant Glove
CR4105-M / CR4105-L



Metal Mesh Glove

SSM525-S
SSM525-M
SSM525-L
SSM525-XL

| Item | Description | Materials | Features | Size |
|----------------|-------------------------------------|-------------------------------|---|-------------------|
| CR4105* | The "Dura-Grab" Cut Resistant Glove | Kevlar® / latex | 100% Kevlar glove ensures superior cut resistance • Latex coating provides increased grip ability • Designed for wet or dry applications • FDA accepted and CE approved | M, L |
| SSM525• | Metal Mesh Glove | Stainless steel | Excellent for chopping, de-boning or other jobs requiring maximum protection • Offers protection without impeding dexterity • Lightweight and easy to clean | S, M, L, XL |
| KG1000 | Heavy Duty Kevlar® Glove | Kevlar® / Neoprene® | Ambidextrous • Excellent gripping ability for slippery jobs Heavyweight • Screen printed Neoprene® dots <i>(both sides)</i> | One size fits all |
| 1000 | Oyster Shucking Glove | Natural rubber latex / cotton | Heavy duty latex palm coating • Cotton lining • Excellent wet or dry grip • Cut and abrasion resistant | One size fits all |

* Specify desired size after item number Example: SSM525-S



Heavy Duty Kevlar® Glove
KG1000



Oyster Shucking Glove
1000

Bar Towels

Consistent quality time after time.



Bar Mop Towel

700BRT28-24 (Ribbed 28 oz./24 pk., Econo-Pack)

700BRT24 (Ribbed 24 oz./dz.)

700BRT28 (Ribbed 28 oz./dz.)

700BRT32 (Ribbed 32 oz./dz.)

701BTT30 (Full Terry 30 oz./dz.)

HTI250W Heavyweight (Size: 15" x 25" (40 oz.))

HTI275W Heavyweight (Size: 16" x 27" (44 oz.))



Oversized Colored Bar Towel

700BRT-BR (Brown)

700BRT-GD (Gold)

700BRT-BK (Black)

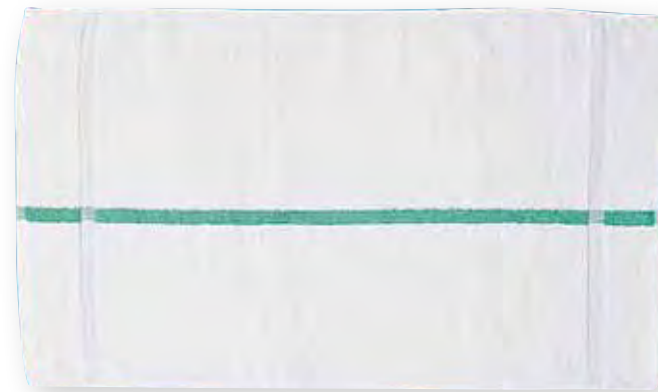
700BRT-NV (Navy)

700BRT-JD (Jade)

700BRT-RB (Royal Blue)

700BRT-BG (Burgundy)

700BRT-HG (Hunter Green)



Oversized Bar Towel with Green Stripe

HTI15GS



Striped Bar Towels

700BRT-GLS

700BRT-GRS

700BRT-BLS



Multi-Stripe Towel

705MSK

| Item | Description | Size | Materials | Features |
|--------------------|---|-----------|----------------------------------|--|
| 700BRT28-24 | Bar Mop Towel (Ribbed 28 oz./24 pk., Econo-Pack) | 16" x 19" | 100% high grade absorbent cotton | Our unique "Narrow-Ribbed" construction offers greater strength, durability and longevity than other Bar Towels. |
| 700BRT24 | Bar Mop Towel (Ribbed 24 oz./dz.) | 16" x 19" | | |
| 700BRT28 | Bar Mop Towel (Ribbed 28 oz./dz.) | 16" x 19" | | |
| 700BRT32 | Bar Mop Towel (Ribbed 32 oz./dz.) | 16" x 19" | | |
| 701BTT30 | Bar Mop Towel (Full Terry 30 oz./dz.) | 16" x 19" | | |
| HTI250W | Heavyweight Bar Mop Towel (Full Terry 40 oz./dz.) | 15" x 25" | | |
| HTI275W | Heavyweight Bar Mop Towel (Full Terry 44 oz./dz.) | 16" x 27" | | |

| Item | Description | Size | Colors | Materials | Features |
|----------------|---------------------------------------|-----------|--|----------------------------|---|
| HTI15GS | Oversized Bar Towel with Green Stripe | 15" x 25" | Green Stripe | 100% cotton terry (44 oz.) | The oversized luxury bar towel |
| 700BRT* | Oversized Colored Bar Towel | 16" x 26" | Brown • Gold • Navy Black • Royal Blue Burgundy • Jade Hunter Green | 100% cotton terry | An excellent multi-purpose towel with longevity and color retention • Also referred to as a "Cart Towel" • Machine washable |
| 700BRT* | Striped Bar Towels | 16" x 19" | Gold Stripes (GLS) Green Stripes (GRS) Blue Stripes (BLS) | 100% cotton (32 oz.) | The luxury bar towel • Easy identification |
| 705MSK | Multi-Stripe Towel | 15" x 26" | Assorted designer stripes | 100% cotton terry | Colorful • Machine washable |

* Specify desired color after item number Example:700BRT-BR

Specialty Towels



Glass Polishing Towel
702GT



Herringbone Towel
703HB



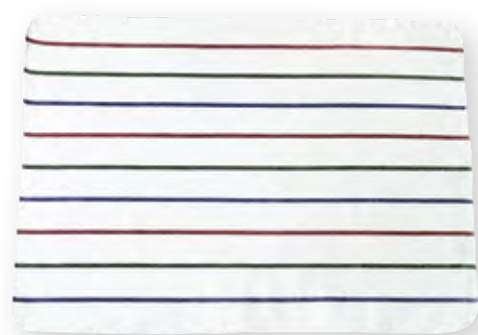
Waffle-Weave Bar Towel
700WT



Waffle-Weave Dish Cloth
706DC

| Item | Description | Size | Materials | Features |
|----------|-------------------------------|-----------|-------------|--|
| 702GT | Glass Polishing Towel | 16" x 29" | 100% cotton | Red pin stripes • Smooth and non-linting |
| 703HB | Herringbone Towel | 15" x 26" | 100% cotton | Striped, Heavy weight • Smooth and non-linting • Ideal for polishing |
| 703HB28 | Extra Large Herringbone Towel | 20" x 28" | 100% cotton | Multi-colored stripes, Heavy weight • Smooth and non-linting • Ideal for polishing |
| 704FSTW | Flour Sack Towel | 22" x 37" | 100% cotton | Non-linting, all purpose towel |
| 704FST36 | Flour Sack Towel | 36" x 36" | 100% cotton | Non-linting, all purpose towel |

| Item | Description | Size | Materials | Features |
|--------|----------------------------|-----------|----------------|---|
| 700WT | Waffle-Weave Bar Towel | 18" x 18" | 100% cotton | Waffle-weave design provides extra scrubbing ability • Natural color |
| 706DC | Waffle-Weave Dish Cloth | 13" x 15" | 100% cotton | Waffle-weave design provides extra scrubbing ability • Assorted designer colors |
| 700WKT | Kitchen "Dry-A-Dish" Towel | 14" x 24" | 100% cotton | "Dry-A-Dish" woven design provides extra drying ability |
| 1016GP | Grill Wipe | 10" x 16" | Cotton / terry | Two-ply absorbent terry cloth with .5" thick cotton liner |



Extra Large Herringbone Towel
703HB28



Flour Sack Towel
704FSTW (shown)
704FST36



Kitchen "Dry-A-Dish" Towel
700WKT



Grill Wipe
1016GP

Microfiber Towels



Microfiber Towels
MFBT-BL-6



Microfiber Towels
(White with gold trim)
MFBT-WH-6

| Item | Description | Size | Materials | Features |
|-----------|--|-------------|------------------------------|---|
| MFBT-BL-6 | Microfiber Towel | 16" x 16" | 100% Polyester/ Polyamide | Absorbs nearly seven times own weight in liquids • Thousands of microscopic fibers pick up and hold dust, dirt & grime • Hypoallergenic, lint-free, non-abrasive cloth • Eliminates streaking • Releases dirt, grime and bacteria when washed |
| MFBT-WH-6 | Microfiber Towel (White with gold trim) | | | |
| MFWW-WH | Microfiber Towels (Waffle Weave) | 16" x 24.5" | | |
| MFWT-BL | Microfiber Glass/ Wiping Towel | 16" x 16" | | |



Microfiber Towels
(Waffle-Weave)
MFWW-WH-6



**Microfiber Glass/
Wiping Towel**
MFWT-BL

Insulated Carriers

Cloth covered outside with an attractive, yet durable material. Cleans easily, long lasting and tough.



Insulated Food Carrier
FC1212-MRN
FC2212-MRN



Insulated Sheet Pan Carrier
ISPC18-MRN

| Item | Description | Size | Features |
|--------------|-----------------------------|-----------------|--|
| FC1212-MRN | Insulated Food Carrier | 12" x 12" x 12" | Includes outside identity pocket • 2 Comfortable padded handles • Insulated 1" foam padding, lined with coated nylon fabric. • Zipper closure |
| FC2212-MRN | Insulated Food Carrier | 22" x 12" x 12" | |
| ISPC18-MRN | Insulated Sheet Pan Carrier | 18" x 26" x 5" | Includes outer identification pocket • Includes excess moisture release grommets |
| TPB20-MRN | Pizza Bags (Pouches) | 20" x 20" x 5" | The best Industrial Pizza Bag made today • Insulated with 1" foam padding and lined with extra tough water repellent nylon • Contains side grommets to allow excessive moisture to escape • Includes outer identification pocket • 75% heat retention after one hour |
| TPB24-MRN | Pizza Bags (Pouches) | 24" x 24" x 5" | |
| TPB20-12-MRN | Magnum Pizza Bags | 20" x 20" x 12" | |



Pizza Bags (Pouches)
TPB20-MRN (shown)
TPB24-MRN



Magnum Pizza Bag
TPB20-12-MRN

Disposables



Corporate Disposable Chef Hat

H055 (7")
H056 (9")
H054 (11")



Disposable Chef Hat (Flair Style)

CHR 12-V
CHR 12-P



Bouffant Caps (Hairnets)

BCAPI10C-W (White)
BCAPI10C-B (Blue)



Beard Cover

BC1000

| Item | Description | Size | Features |
|---------|-----------------------------------|--------------------|--|
| H055 | Corporate Disposable Chef Hat | 7" Tall | Lightweight • Vented top • Easy to dispose |
| H056 | Corporate Disposable Chef Hat | 9" Tall | |
| H054 | Corporate Disposable Chef Hat | 11" Tall | |
| CHR12-V | Disposable Chef Hat (Flair Style) | 12" Tall | Deluxe viscose non-woven material • Contains an adjustable size tab • Includes user friendly ventilation holes |
| CHR12-P | Disposable Chef Hat (Flair Style) | 12" Tall | Economy paper style • Contains an adjustable size tab • Includes user friendly ventilation holes |
| DCH100 | Disposable Chef Hat (Euro Style) | 9" Tall | White paper with linen finish • Contains a "Touch and Seal" size adjustment as well as a sweatband |
| DRC100 | Disposable Overseas Cap | One size fits most | Adjustable self-locking headband |

| Item | Description | Color | Features |
|-----------|-------------------------------|-------------------------|---|
| BCAPI10C* | Bouffant Caps (Hairnets) | White • Blue | 24" • Made with soft polypropylene • Used in food service and medical facilities • Elastic fit • Non-irritating, anti-static material • Lint-free • Flame-resistant |
| BC1000 | Beard Cover | White | Made with soft polypropylene |
| DHN500* | Hairnets | Brown • Black Blonde | Nylon • Flame retardant |
| 8705 | Disposable Bib Apron (Medium) | White | 24" x 42" • Lightweight 1.25 mil polyethylene • Economical and durable |
| 8706 | Disposable Bib Apron (Large) | White | 28" x 46" • Lightweight 1.25 mil polyethylene • Economical and durable |

* Specify desired color after item number Example: BCAP110C-W



Disposable Chef Hat (Euro Style)

DCH100



Disposable Overseas Cap

DRC100



Hairnets

DHN500-BR (Brown)
DHN500-BL (Blonde)
DHN500-BK22 (Black)



Disposable Bib Apron

8705 (Medium)
8706 (Large)

Index by Part Number

| Product | Page # | Product | Page # | Product | Page # | Product | Page # | Product | Page # | Product | Page # | Product | Page # | Product | Page # |
|------------------|--------|-----------------|--------|-----------------|--------|---------------|--------|-----------------|--------|--------------|--------|-----------------|--------|--------------|--------|
| # | | 603FW..... | 56 | 703HB28..... | 90 | 850TF17..... | 69 | CB1016..... | 38 | H | | H063WH..... | 35 | J015..... | 13 |
| 1000..... | 87 | 603FWPS-BK..... | 56 | 704FST36..... | 90 | 884..... | 80 | CH-EURO..... | 53 | H002..... | 51 | H064BK..... | 35 | J016..... | 13 |
| 1016GP..... | 91 | 604VBA..... | 65 | 704FSTV..... | 90 | 887..... | 80 | CHR12..... | 94 | H008..... | 51 | H065..... | 51 | J016CLT..... | 15 |
| 1214..... | 81 | 605PS-BK..... | 56 | 705MSK..... | 89 | 870*..... | 95 | CR4105..... | 87 | H009..... | 51 | H066..... | 51 | J017BK..... | 15 |
| 1217EL..... | 81 | 605REV-BK..... | 56 | 706DC..... | 91 | | | CRDR6..... | 43 | H014..... | 51 | H067..... | 53 | J018BD..... | 15 |
| 12NF..... | 83 | 605WAFH..... | 56 | 720..... | 83 | A | | CRMERCHI..... | 43 | H017..... | 51 | H400..... | 53 | J022..... | 17 |
| 13NU..... | 82 | 607BA..... | 57 | 800FG..... | 68 | A004..... | 33 | CRMERCH247..... | 43 | H020..... | 52 | H500..... | 52 | J023..... | 17 |
| 19NU..... | 82 | 607BA2-BK..... | 57 | 801SG..... | 70 | A005..... | 32 | CS006BK..... | 48 | H023WH..... | 52 | HTI15GS..... | 89 | J024..... | 17 |
| 20PD..... | 73 | 607HBA2..... | 57 | 802BG..... | 76 | A007..... | 33 | CS006WH..... | 48 | H026..... | 35 | HTI250W..... | 88 | J027..... | 21 |
| 238SF..... | 81 | 607PSI-BK..... | 57 | 802SPH..... | 77 | A008..... | 33 | | | H032..... | 51 | HTI275W..... | 88 | J028..... | 19 |
| 401BA..... | 50 | 607PS-BK..... | 57 | 802TF..... | 76 | A009BK..... | 32 | D | | H033PK..... | 52 | | | J029..... | 19 |
| 402WA..... | 50 | 610BAC..... | 62 | 802TPH..... | 77 | A011BK..... | 33 | DCH100..... | 94 | H036..... | 51 | I | | J030BK..... | 19 |
| 403FW..... | 50 | 612BAFH..... | 59 | 803PG..... | 78 | | | DFG1000..... | 86 | H039CLT..... | 52 | IG100..... | 79 | J031..... | 21 |
| 5312-WH..... | 79 | 614DVA..... | 65 | 804BG..... | 75 | B | | DHN500..... | 95 | H042..... | 51 | ISPC18-MRN..... | 93 | J032..... | 19 |
| 600BAW..... | 62 | 615NBA..... | 64 | 804CP..... | 75 | BC1000..... | 95 | DRC100..... | 94 | H044..... | 51 | | | J034..... | 23 |
| 600BAW-D..... | 63 | 619BA..... | 32 | 804HH..... | 75 | BCAPI10C..... | 95 | | | H047..... | 51 | J | | J044..... | 11 |
| 600BAW-NP..... | 62 | 620..... | 83 | 805THH..... | 75 | BIN30-WH..... | 43 | H048..... | 53 | H049..... | 53 | J001..... | 24 | J045BK..... | 19 |
| 600BAW-XL..... | 63 | 625CBA..... | 61 | 811TG..... | 70 | BIN36-CR..... | 43 | FC1212-MRN..... | 93 | H050..... | 53 | J002..... | 24 | J049..... | 46 |
| 600PS-NP..... | 63 | 667..... | 72 | 812TPH..... | 77 | BT12..... | 36 | FC2212-MRN..... | 93 | H051..... | 53 | J003..... | 24 | J050..... | 46 |
| 600PS-NP-BK..... | 60 | 6786RMT..... | 72 | 813RPH..... | 77 | BT30..... | 36 | FGI-OR..... | 73 | H054..... | 94 | J004..... | 24 | J053..... | 13 |
| 600PS-PP..... | 63 | 6R-2000..... | 83 | 813TM..... | 71 | BY12..... | 81 | | | H055..... | 94 | J005..... | 24 | J057..... | 13 |
| 601BAC..... | 58 | 700BRT..... | 88 | 817TM..... | 71 | | | G | | H056..... | 94 | J006..... | 9 | J058..... | 13 |
| 601BAO-3..... | 59 | 700WKT..... | 91 | 823TPH..... | 78 | C | | G-10..... | 36 | H057..... | 94 | J007..... | 9 | J061BK..... | 46 |
| 601MAJ-BK..... | 64 | 700WT..... | 91 | 824TM..... | 71 | CB007..... | 52 | G-10-R..... | 36 | H058..... | 35 | J008..... | 9 | J100..... | 48 |
| 601NP..... | 64 | 701BTT30..... | 88 | 835PG..... | 78 | CB1004..... | 38 | G-40..... | 36 | H059WH..... | 35 | J009..... | 9 | J105..... | 48 |
| 602BAFH..... | 58 | 702GT..... | 90 | 845PG..... | 78 | CB1008..... | 36 | G-40-R..... | 36 | H060BK..... | 35 | J013..... | 17 | J112..... | 25 |
| 602PS-BK..... | 60 | 703HB..... | 90 | 850TF15-GY..... | 69 | CB1012..... | 48 | G-80..... | 36 | | | J134..... | 47 | | |

Index by Part Number

| Product | Page # | Product | Page # | Product | Page # | Product | Page # |
|--------------|--------|-----------------|--------|--------------|--------|-------------------|--------|
| J149..... | 46 | LJ027..... | 25 | P | | T | |
| JB001..... | 39 | LJ028..... | 25 | P002BK..... | 31 | T001..... | 23 |
| K | | LJ030BL..... | 15 | P004HT..... | 31 | T004BK..... | 23 |
| KA001..... | 39 | LJ031YL..... | 15 | P005HT..... | 31 | T121*..... | 72 |
| KB10..... | 37 | LJ032CLT..... | 15 | P014BK..... | 30 | TPB20-12-MRN..... | 93 |
| KB17..... | 37 | LJ044..... | 11 | P015HT..... | 30 | TPB20-MRN..... | 93 |
| KB7..... | 37 | LP00*..... | 27 | P016VWS..... | 30 | TPB24-MRN..... | 93 |
| KG1000..... | 87 | LP002..... | 27 | P017BK..... | 28 | TS001..... | 39 |
| KH001..... | 39 | LP203..... | 28 | P018HT..... | 28 | TS002..... | 39 |
| KJ001..... | 39 | M | | P019BGS..... | 28 | | |
| KM15..... | 71 | MFBT..... | 92 | P020..... | 49 | V | |
| KM17..... | 71 | MFSCR-BL..... | 92 | P023..... | 26 | VNA3840..... | 611 |
| KT01*..... | 66 | MFVT-BL..... | 92 | P024BK..... | 26 | | |
| KT01*K..... | 66 | MFVW-WH-6..... | 92 | P034..... | 29 | NOTES | |
| KT02*K..... | 66 | ML5000..... | 73 | P040..... | 31 | | |
| KT030*..... | 76 | N | | P201CPZ..... | 49 | | |
| KT0401..... | 74 | NGPG-11..... | 78 | P31..... | 80 | | |
| KT060*..... | 75 | O | | PBS301..... | 86 | | |
| L | | OM17-GYW..... | 70 | R | | | |
| LC001..... | 37 | OMNI*..... | 67 | R93517..... | 81 | | |
| LJ008..... | 9 | OMNOV13-CP..... | 71 | S | | | |
| LJ021PK..... | 15 | OMNP15..... | 67 | SG10..... | 85 | | |
| LJ025BK..... | 15 | OMNP18..... | 67 | SLK16..... | 74 | | |
| LJ025..... | 13 | | | SLWT16..... | 74 | | |
| LJ026..... | 13 | | | SSM525..... | 87 | | |

NOTES

NOTES



CHEF REVIVAL® - FIND US AROUND THE WORLD!

- SJCR Canada
- SJCR World HQ
- SJCR México
- SJCR Europe



CORPORATE HEADQUARTERS

San Jamar - Chef Revival

555 Koopman Lane
Elkhorn, Wisconsin 53121
USA
T: +1.800.352.CHEF (2433)
T: +1.262.723.6135
F: +1.262.723.1831
info@chefrevival.com

SJCR Canada

3300 Bloor Street West
Centre Tower, 11th Floor
Suite 3140
Toronto, ON M8X 2X3
CANADA
T: +1.416.760.7367
F: +1.416.207.2071
canada@sjcr.com

SJCR Europe

Schoorstraat 26a, bus 1
2220 Heist op-den Berg
BELGIUM
T: +32 1522 8140
F: +32 1522 8148
emea@sjcr.com

SJCR México

Av. Universidad # 1377-701
Col. Axotla CP 01030
Del. Alvaro Obregon
Mexico D.F. MEXICO
T: +52 (55) 3626 0772
F: +52 (55) 5273 4495
mexico@sjcr.com